

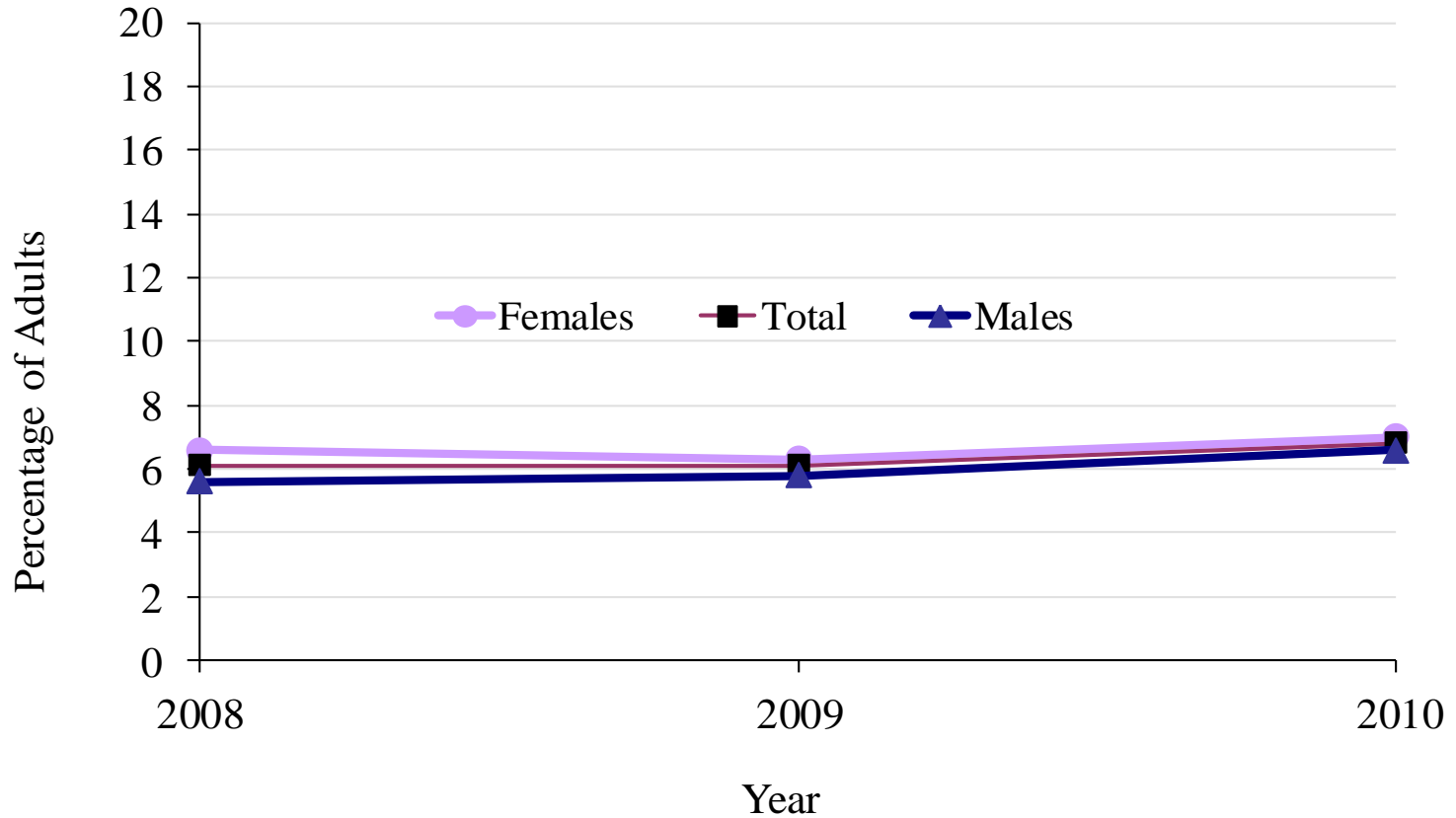
Diabetes Surveillance Report, Maine 2012

Slide Set

Chapter 1

Prevalence of Diabetes and Prediabetes

Figure 1.1 Prediabetes Prevalence by Year and Gender, Maine Adults, 2008-2010

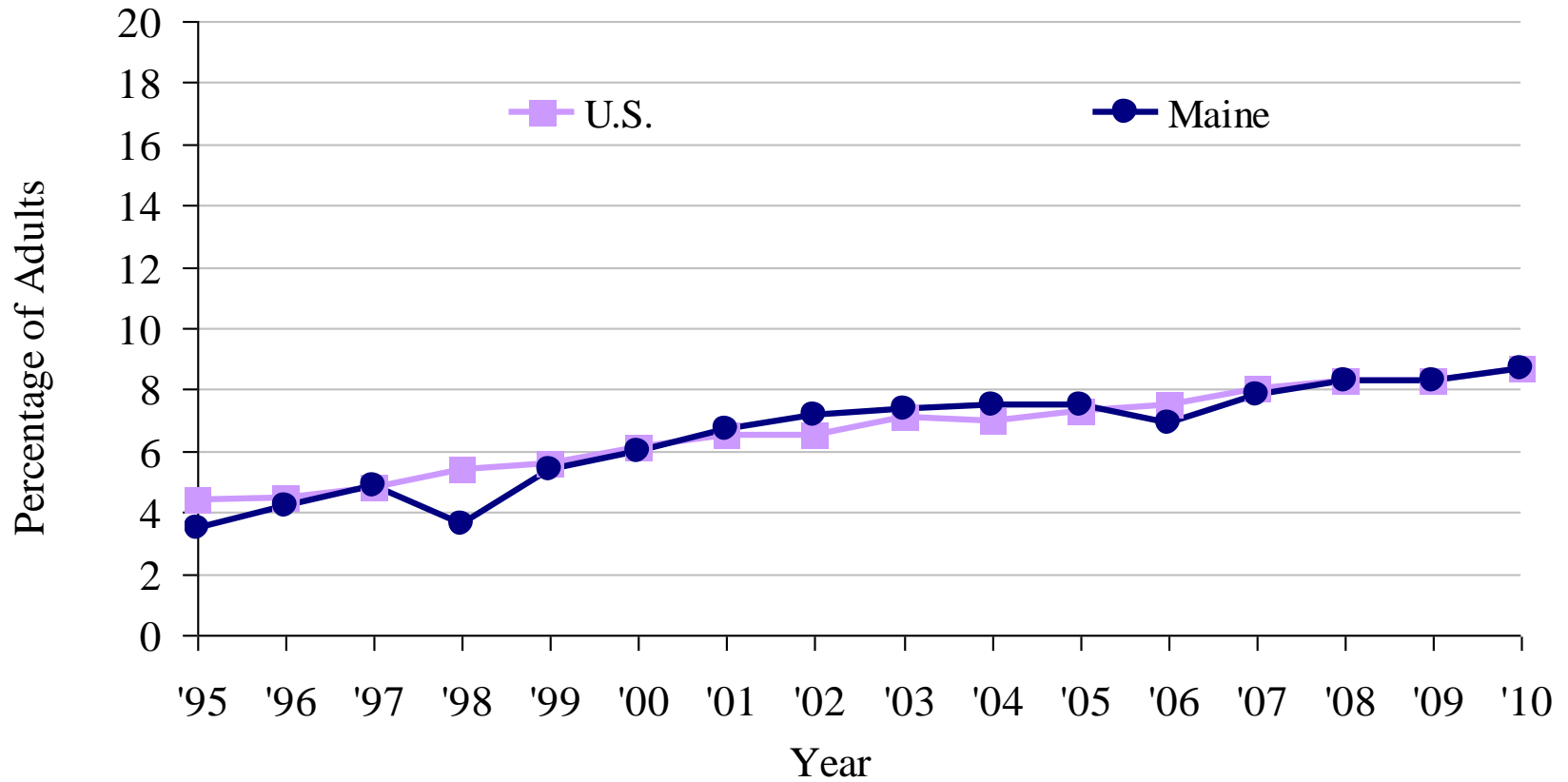


Prediabetes does not include pregnancy-related prediabetes.

Adults = ages 18+ years.

Data Source: Behavioral Risk Factor Surveillance System.

Figure 1.2 Diabetes Prevalence, U.S. and Maine Adults, 1995-2010

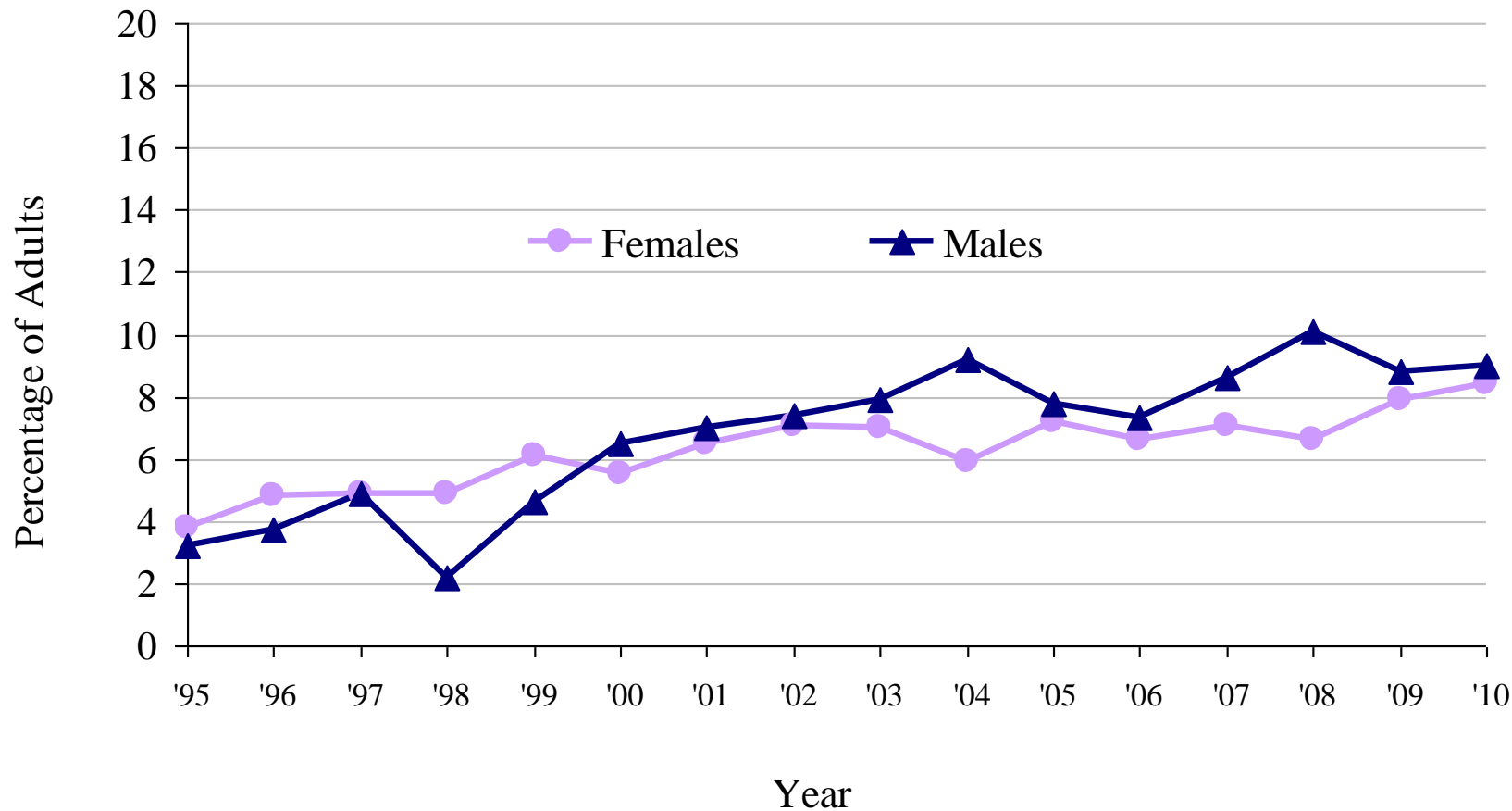


Diabetes does not include pregnancy-related diabetes.

Adults = ages 18+ years.

Data Source: Behavioral Risk Factor Surveillance System.

Figure 1.3 Diabetes Prevalence by Year and Gender,
Maine Adults, 1995-2010

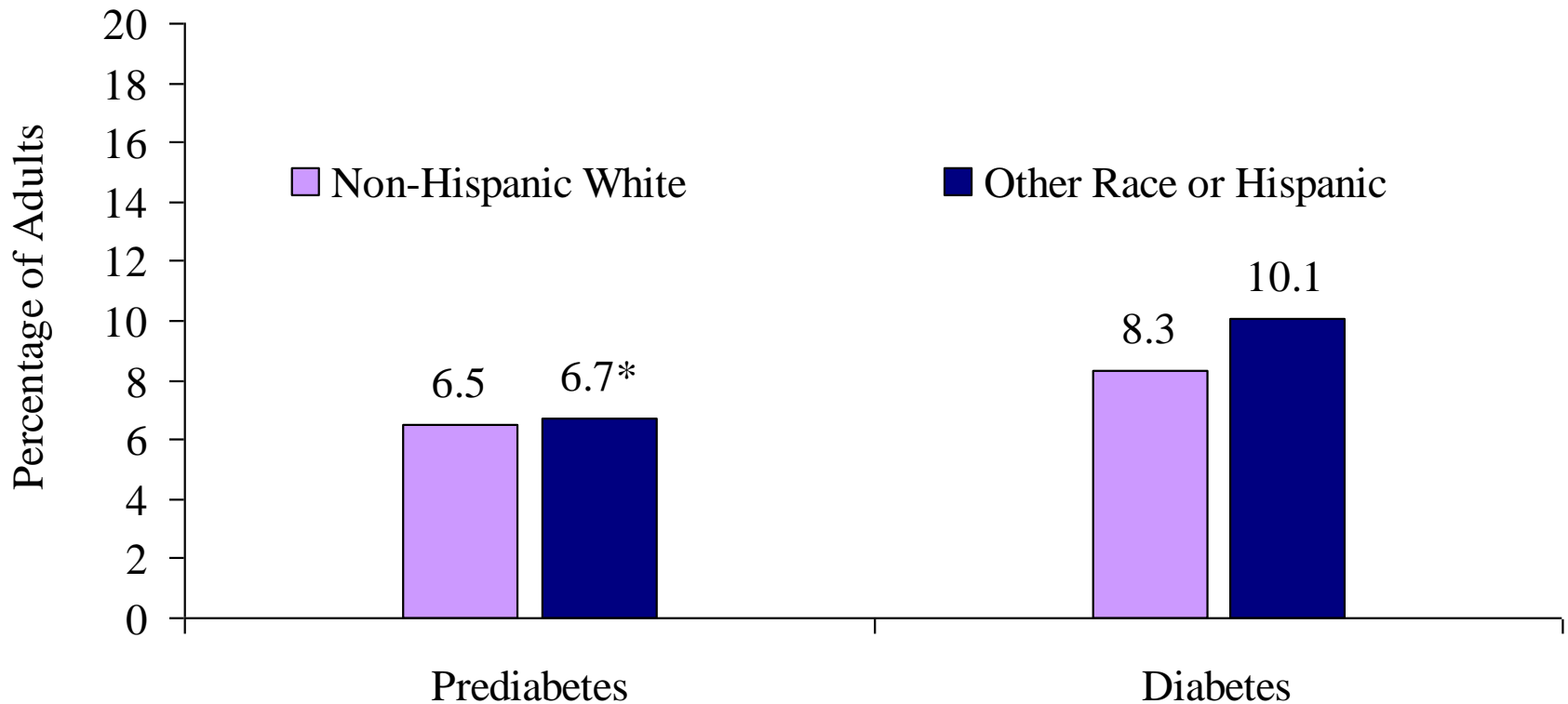


Diabetes does not include pregnancy-related diabetes.

Adults = ages 18+ years.

Data Source: Behavioral Risk Factor Surveillance System.

Figure 1.4 Prediabetes and Diabetes Prevalence by Race, Maine Adults, 2008-2010



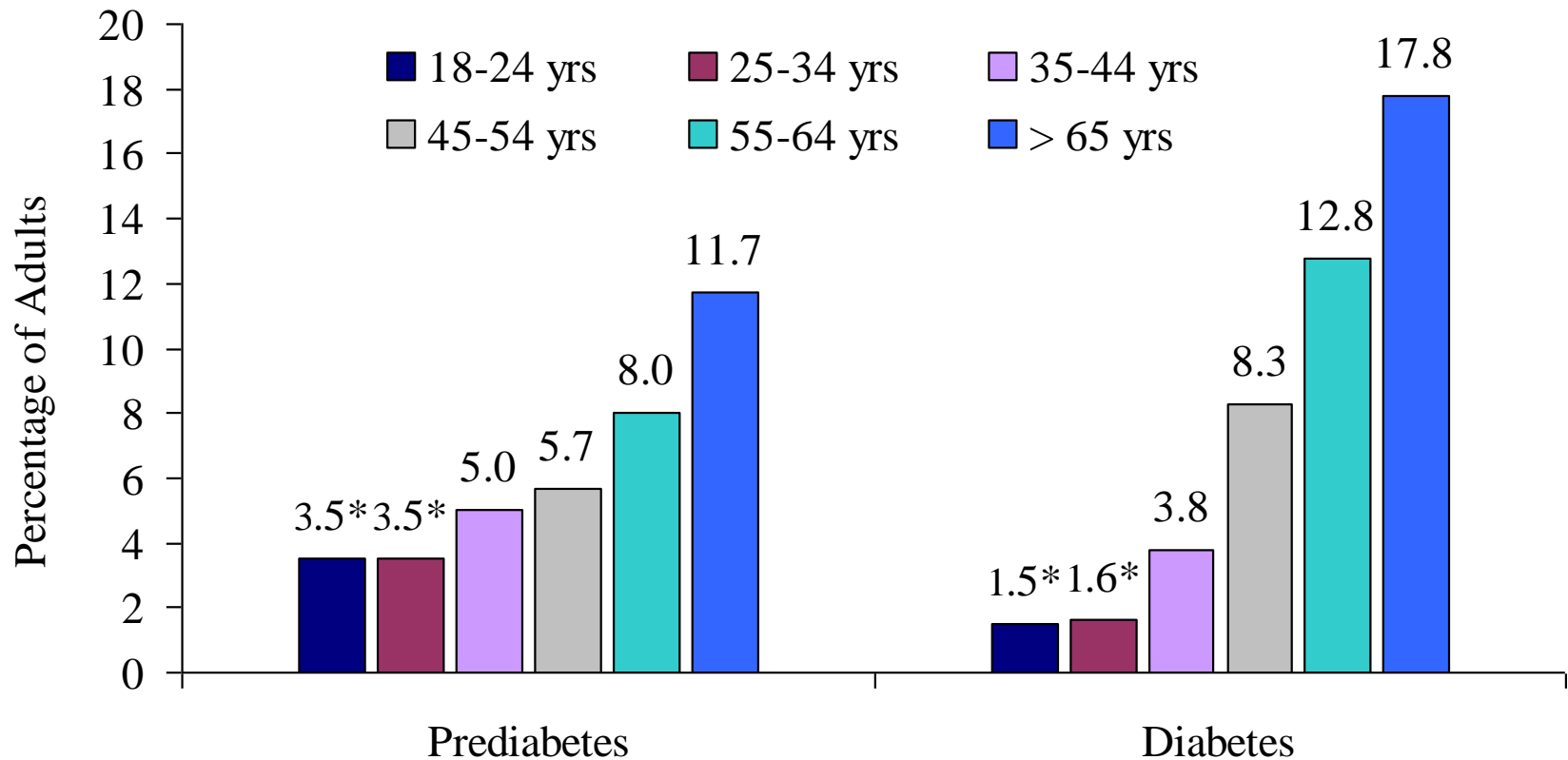
Prediabetes and diabetes do not include pregnancy-related prediabetes and diabetes.

Adults = ages 18+ years.

*This percentage is based on a numerator < 50 and may be unreliable; please use caution in interpreting.

Data Source: Behavioral Risk Factor Surveillance System.

Figure 1.5 Prediabetes and Diabetes Prevalence by Age, Maine Adults, 2008-2010



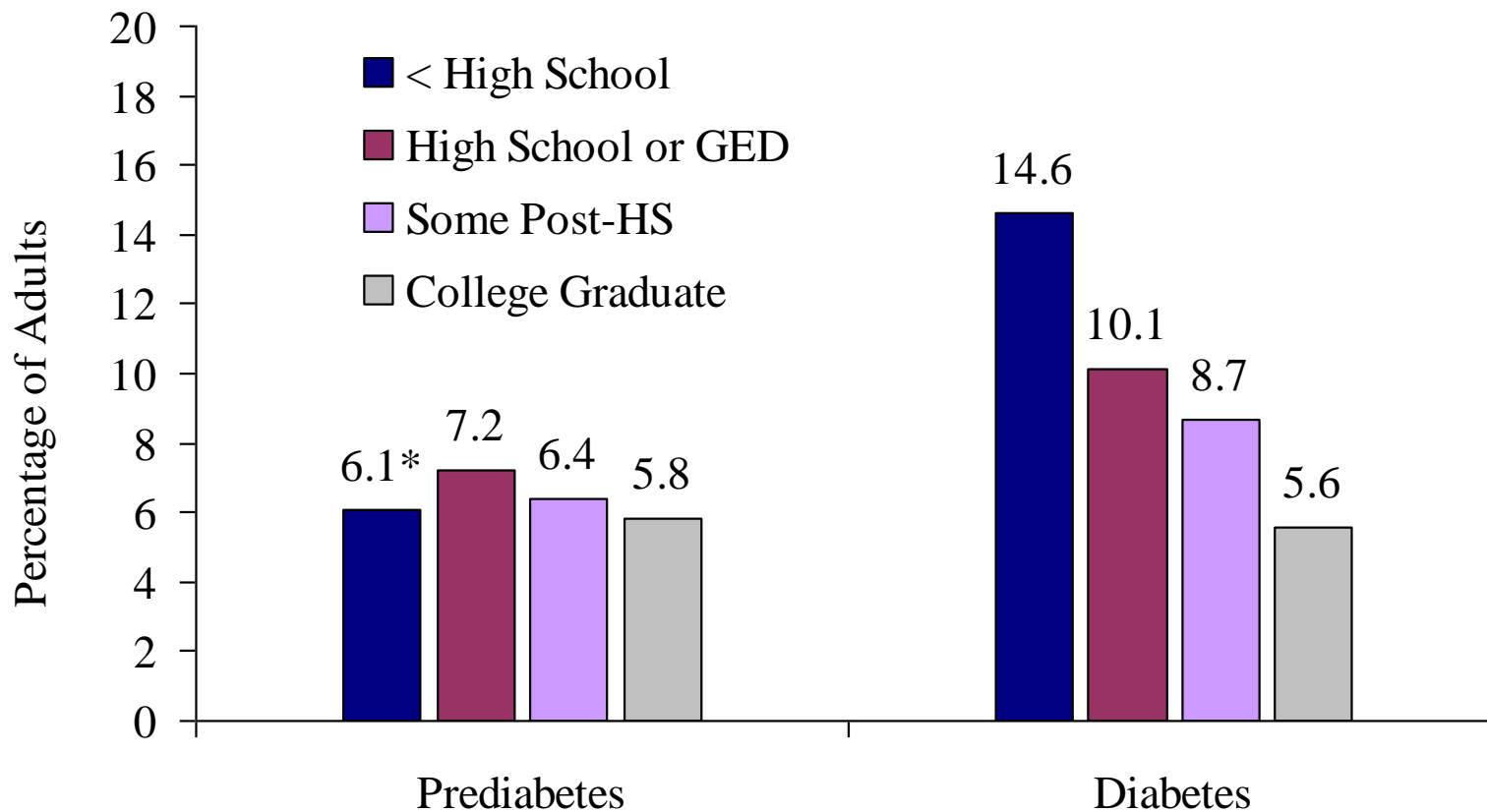
Prediabetes and diabetes do not include pregnancy-related prediabetes and diabetes.

Adults = ages 18+ years.

*These percentages are based on a numerator < 50 and may be unreliable; please use caution in interpreting.

Data Source: Behavioral Risk Factor Surveillance System.

Figure 1.6 Prediabetes and Diabetes Prevalence by Education, Maine Adults, 2008-2010



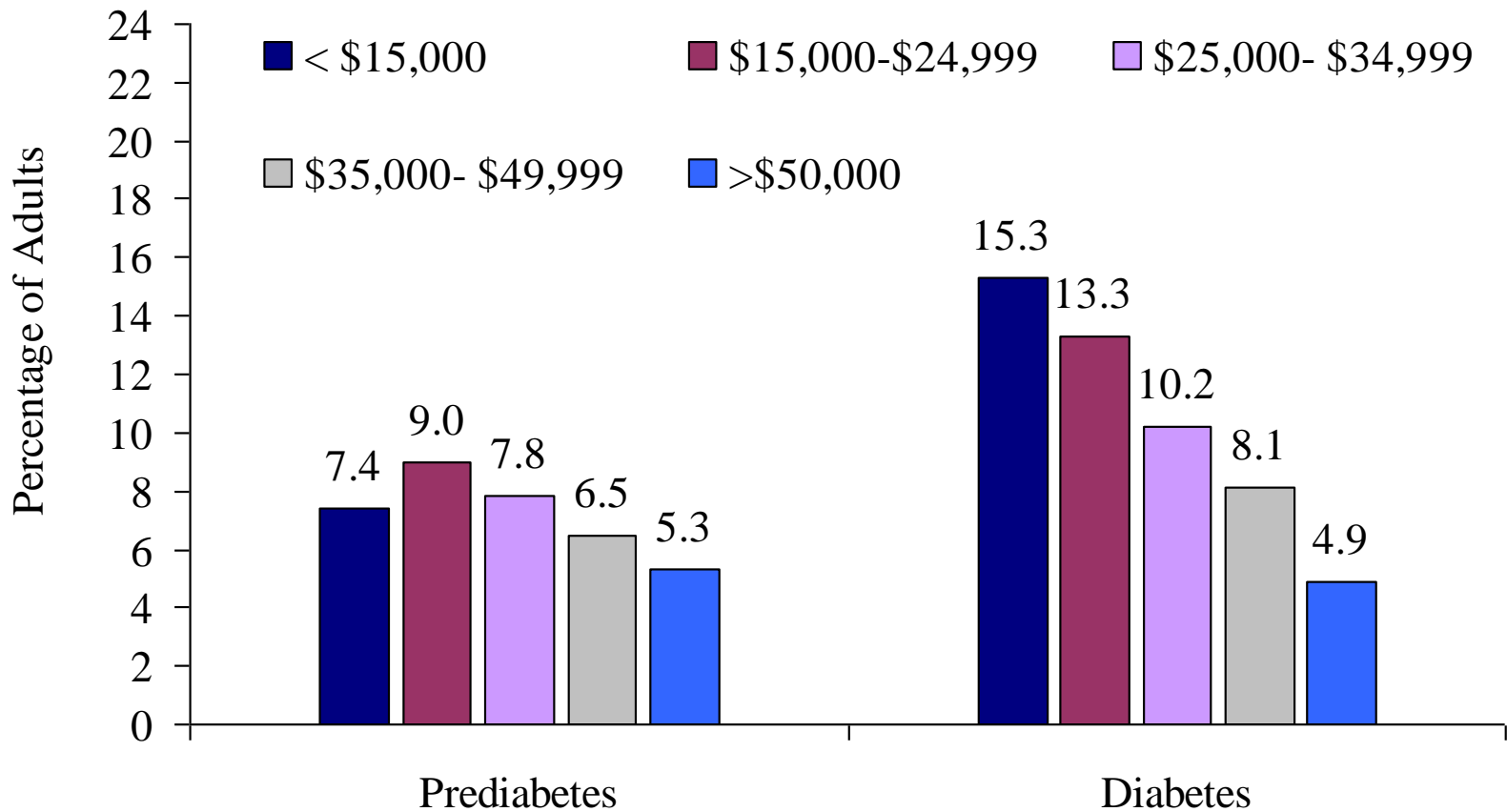
Prediabetes and diabetes do not include pregnancy-related prediabetes and diabetes.

Adults = ages 18+ years.

*This percentage is based on a numerator < 50 and may be unreliable; please use caution in interpreting.

Data Source: Behavioral Risk Factor Surveillance System.

Figure 1.7 Prediabetes and Diabetes Prevalence by Income, Maine Adults, 2008-2010



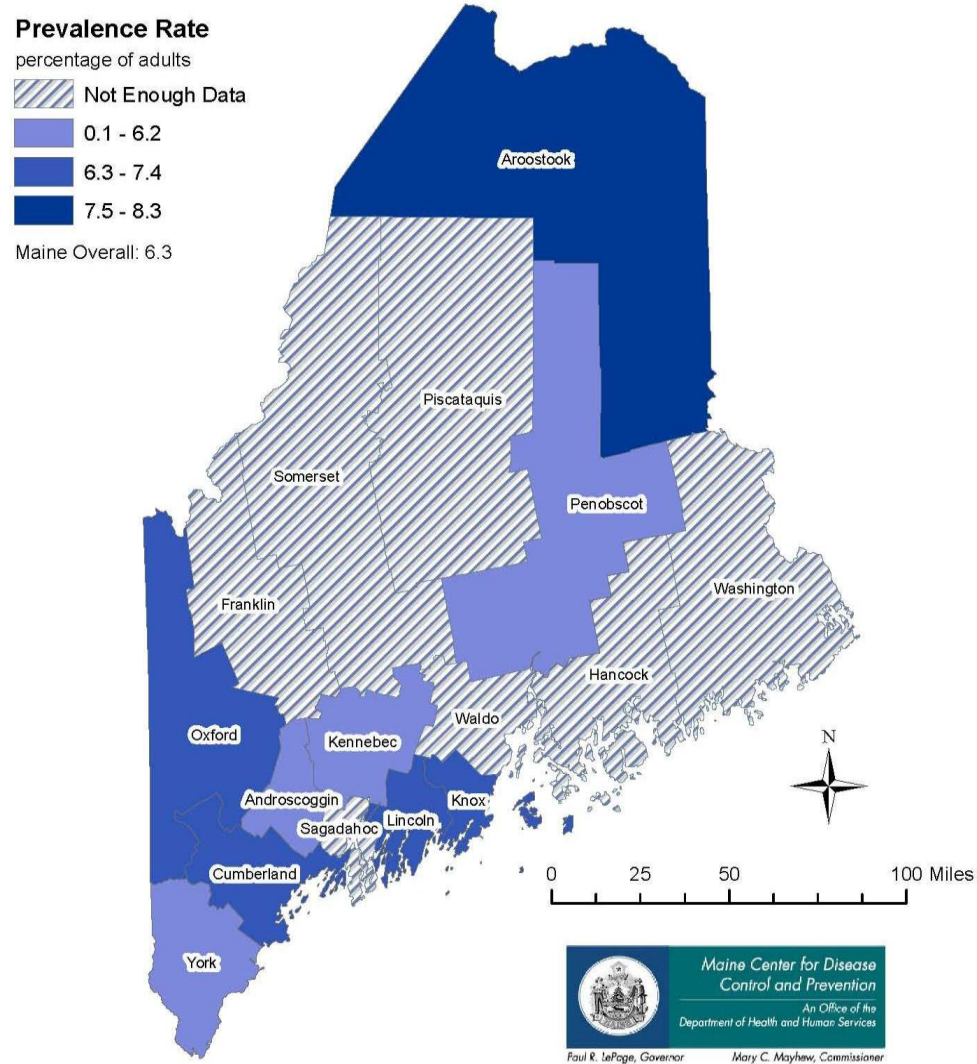
Prediabetes and diabetes do not include pregnancy-related prediabetes and diabetes.

Adults = ages 18+ years.

Income is annual household income.

Data Source: Behavioral Risk Factor Surveillance System.

Figure 1.8 Prediabetes Prevalence by County of Residence, Maine Adults, 2008-2010

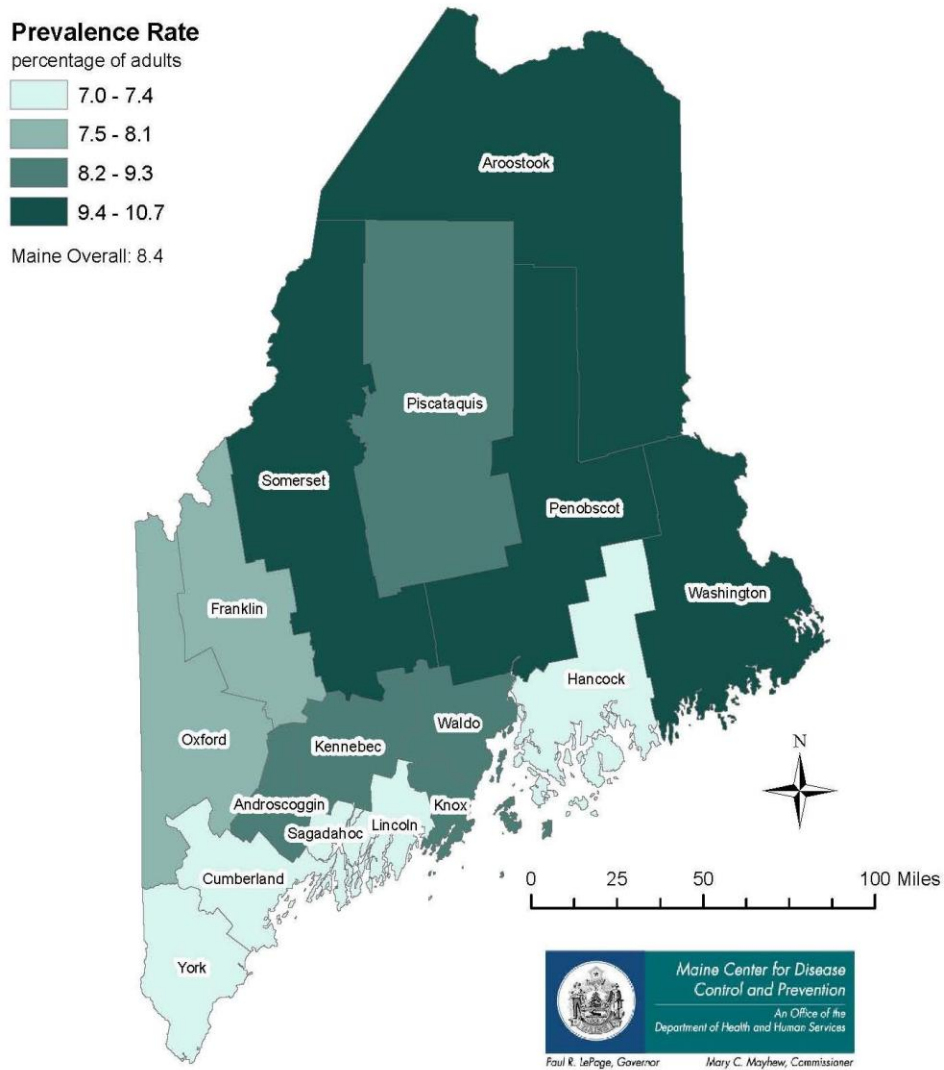


Data Source: Behavioral Risk Factor Surveillance System.
All %s are weighted to be more representative of the general adult population of Maine and to adjust for non-response.

Prediabetes does not include pregnancy-related prediabetes.

Map Created by David Pied and Nisha Kini on 04/18/2012

Figure 1.9 Diabetes Prevalence by County of Residence, Maine Adults, 2008-2010



Data Source: Behavioral Risk Factor Surveillance System.
 All %s are weighted to be more representative of the general adult population of Maine and to adjust for non-response.

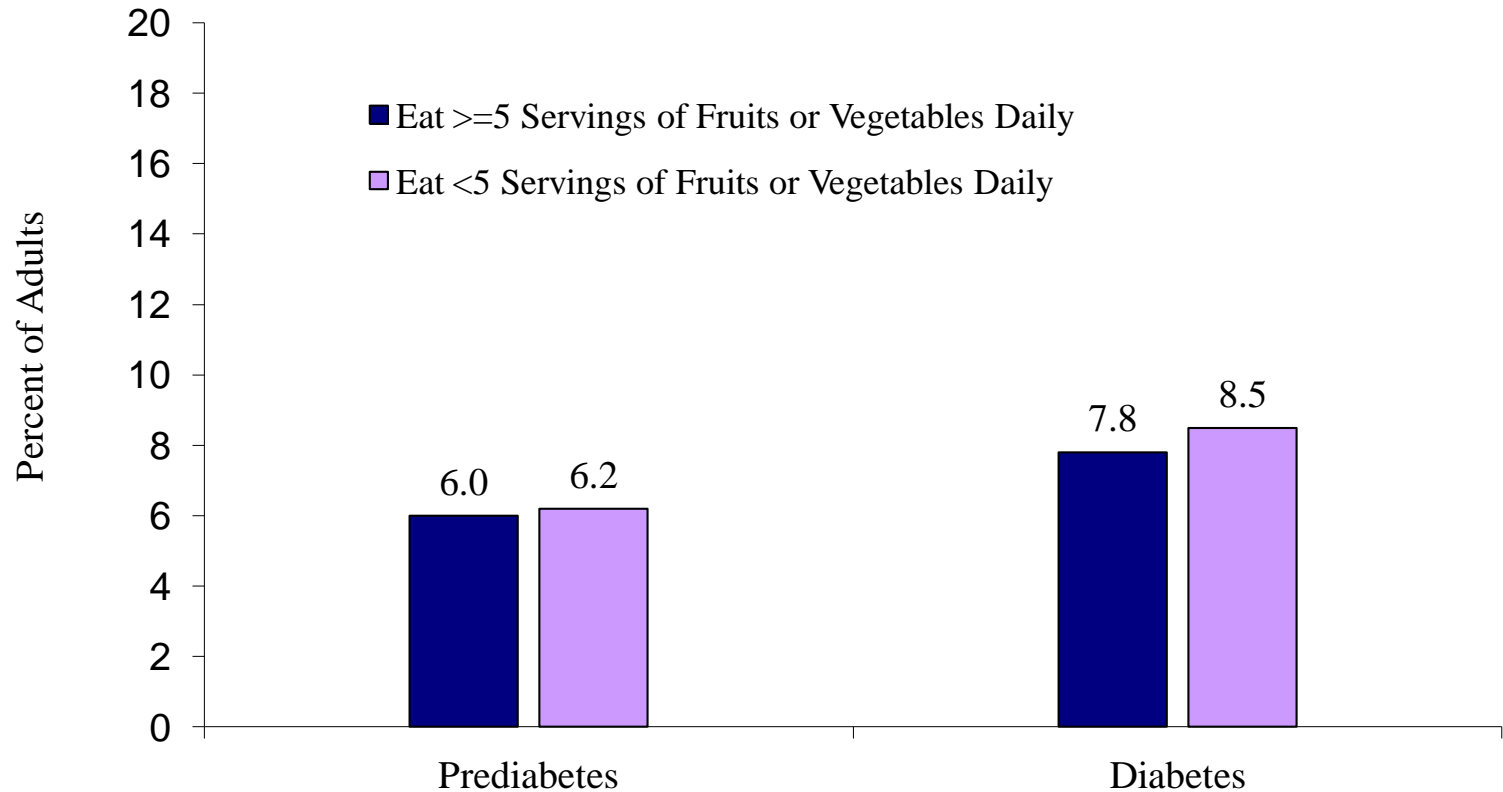
Diabetes does not include pregnancy-related diabetes.

Map Created by David Pied and Nisha Kini on 04/18/2012

Chapter 2

Prevalence of Diabetes and
Prediabetes by Selected Risk Factors

Figure 2.1 Prediabetes and Diabetes Prevalence by Fruit and Vegetable Consumption, Maine Adults, 2009

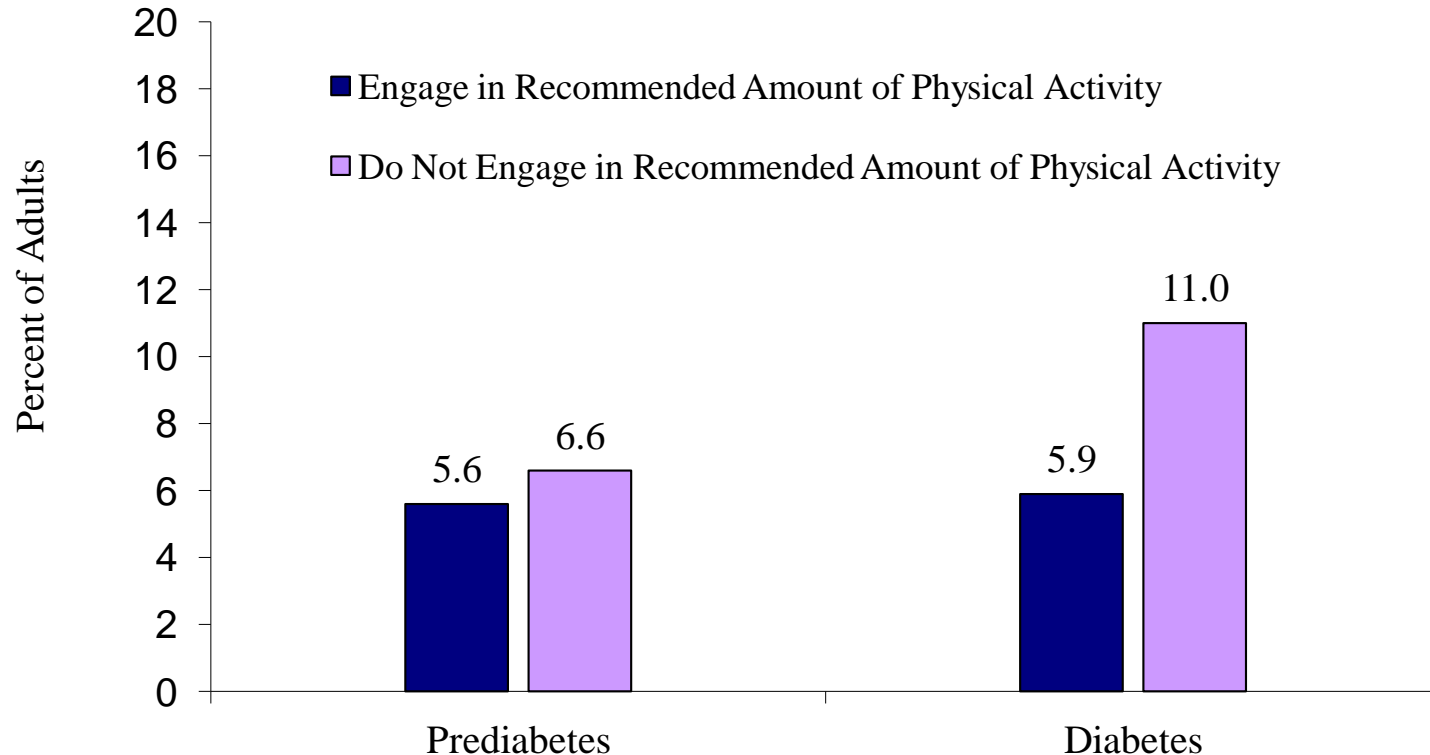


Prediabetes and diabetes do not include pregnancy-related prediabetes and diabetes.

Adults = ages 18+ years.

Data Source: Behavioral Risk Factor Surveillance System.

Figure 2.2 Prediabetes and Diabetes Prevalence by Physical Activity Status, Maine Adults, 2009



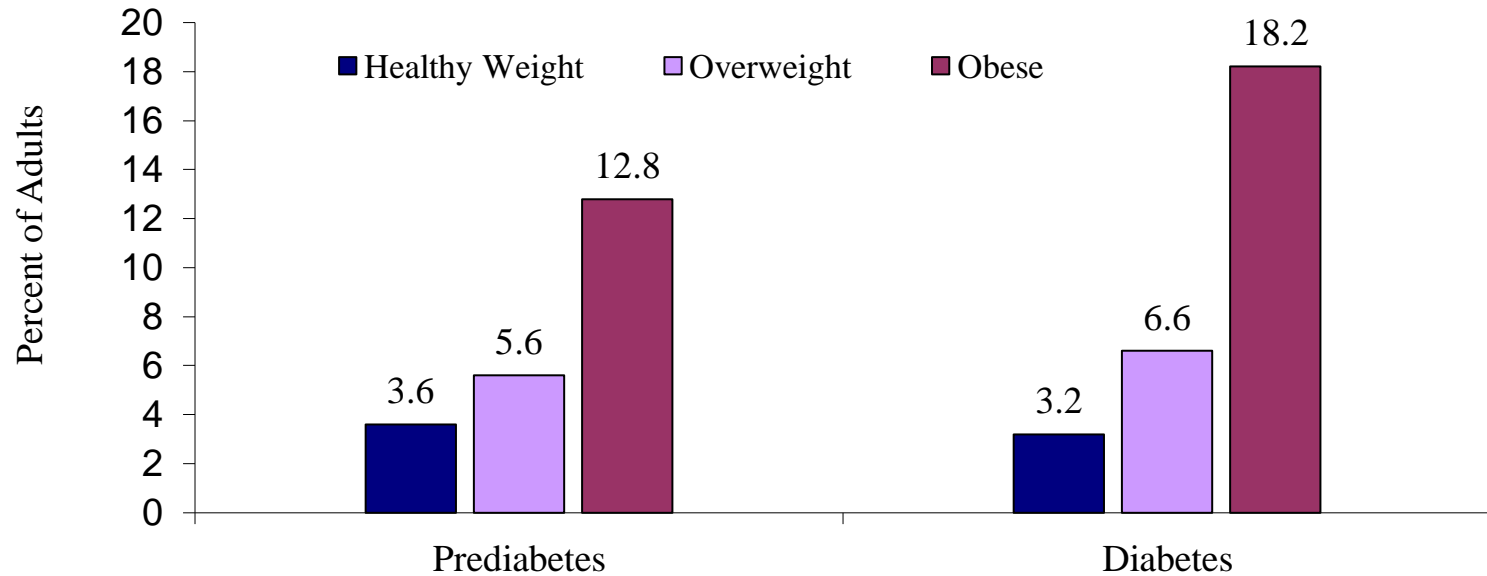
Prediabetes and diabetes do not include pregnancy-related prediabetes and diabetes.

Recommended amount of physical activity is defined as 30+ minutes of moderate physical activity five or more days per week, or vigorous physical activity for 20+ minutes three or more days per week.

Adults = ages 18+ years.

Data Source: Behavioral Risk Factor Surveillance System.

Figure 2.3 Prediabetes and Diabetes Prevalence by Weight Status, Maine Adults, 2010



Prediabetes and diabetes do not include pregnancy-related prediabetes and diabetes.

Healthy weight defined as BMI ≥ 18.5 and < 25.0 kg/m²;

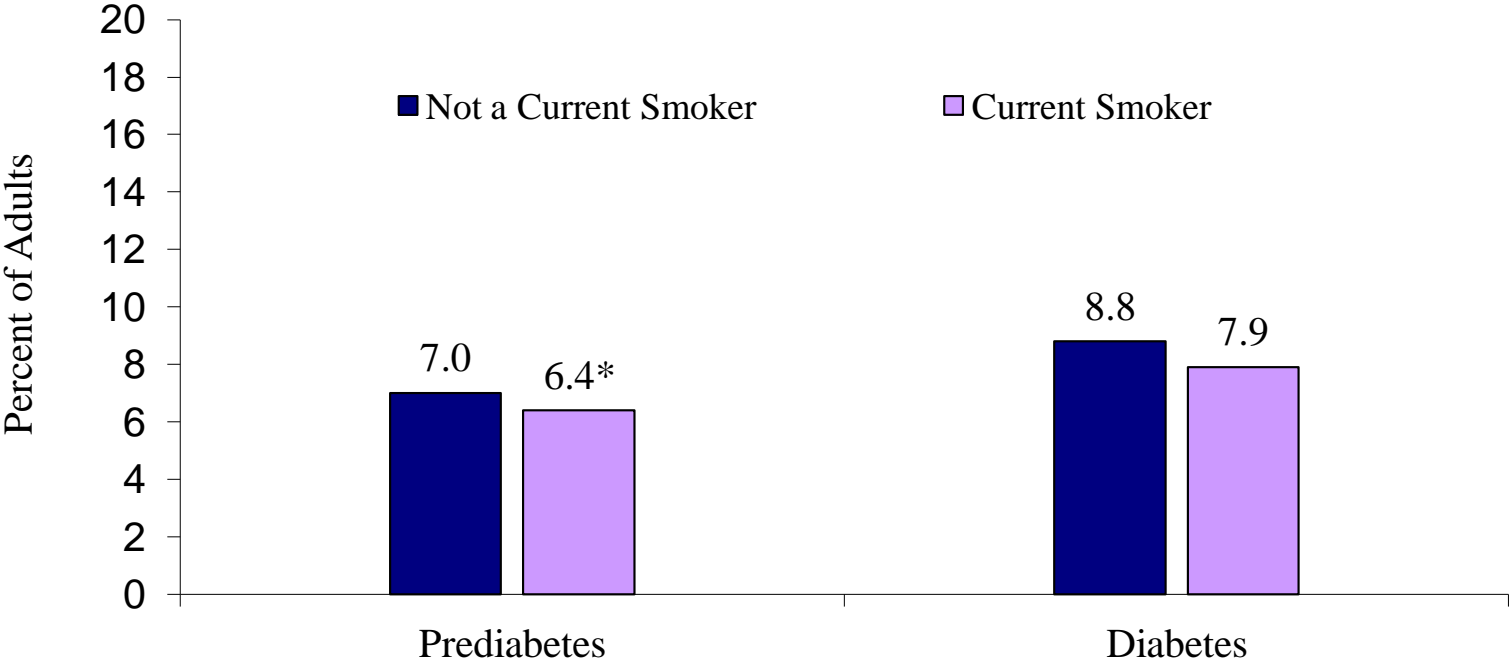
Overweight defined as BMI ≥ 25.0 and < 30.0 kg/m²;

Obese defined as BMI ≥ 30 kg/m².

Adults = ages 18+ years.

Data Source: Behavioral Risk Factor Surveillance System.

Figure 2.4 Prediabetes and Diabetes Prevalence by Smoking Status, Maine Adults, 2010



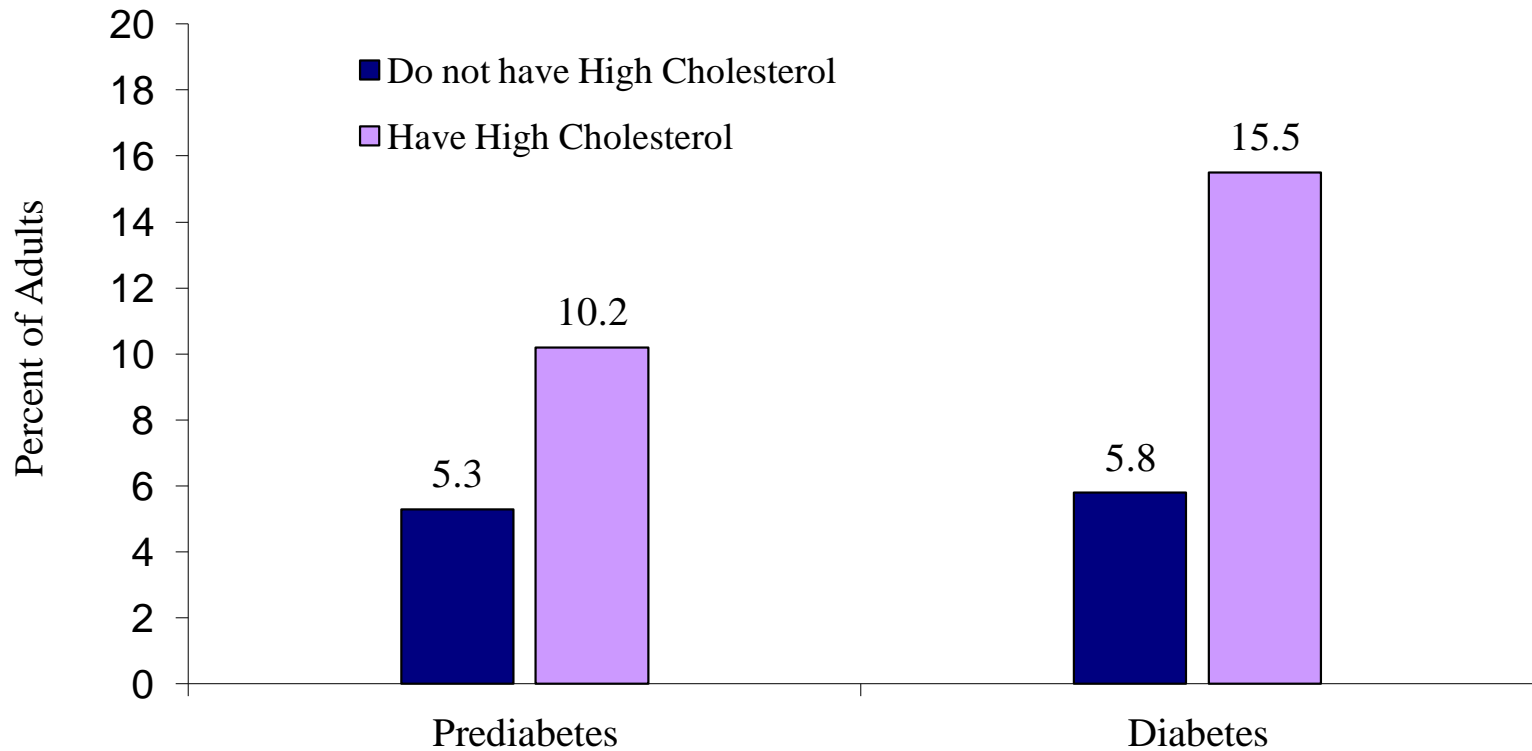
Prediabetes and diabetes do not include pregnancy-related prediabetes and diabetes.

Adults = ages 18+ years.

*This percentage is based on a numerator < 50 and may be unreliable; please use caution in interpreting.

Data Source: Behavioral Risk Factor Surveillance System.

Figure 2.5 Prediabetes and Diabetes Prevalence by High Cholesterol Status, Maine Adults, 2009

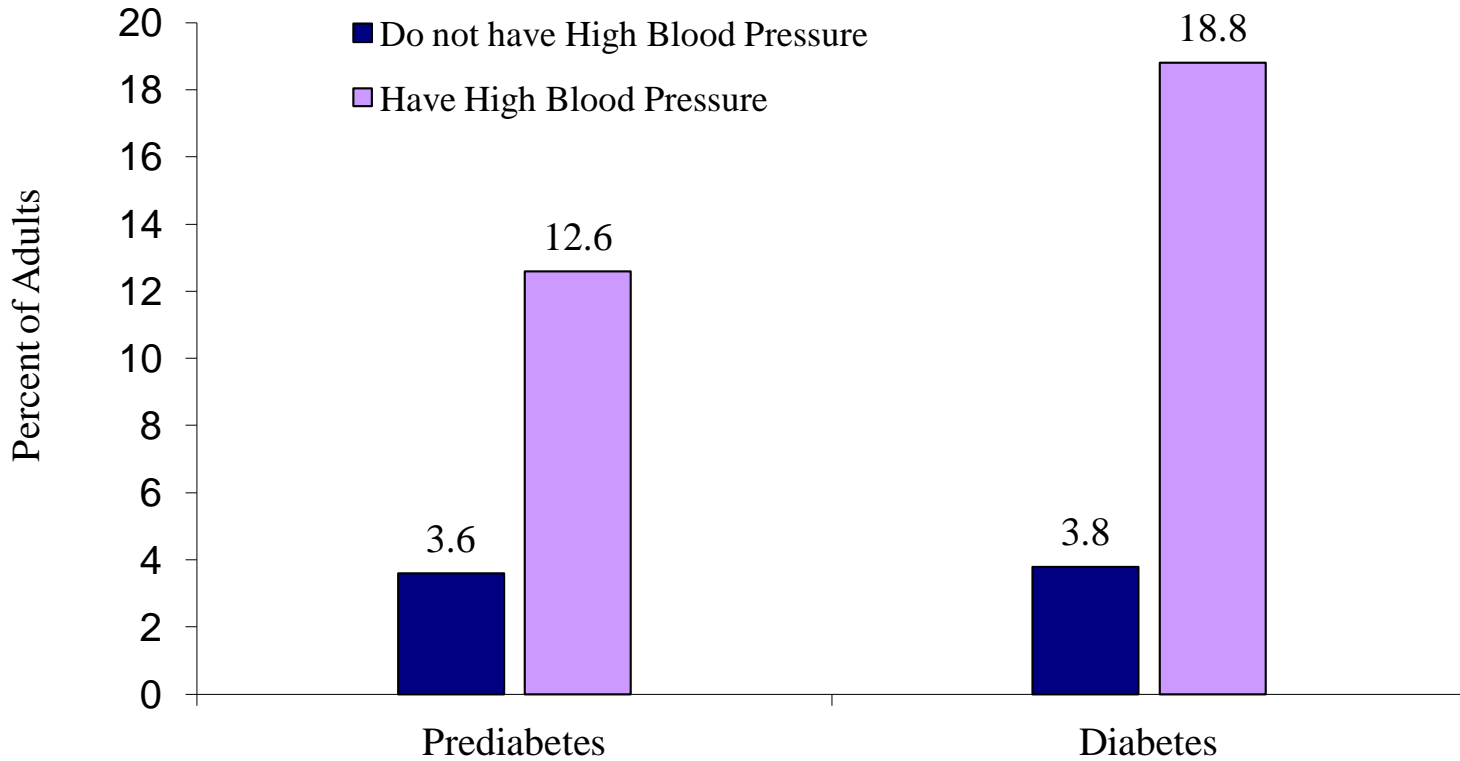


Prediabetes and diabetes do not include pregnancy-related prediabetes and diabetes.

Adults = ages 18+ years.

Data Source: Behavioral Risk Factor Surveillance System.

Figure 2.6 Prediabetes and Diabetes Prevalence by High Blood Pressure Status, Maine Adults, 2009

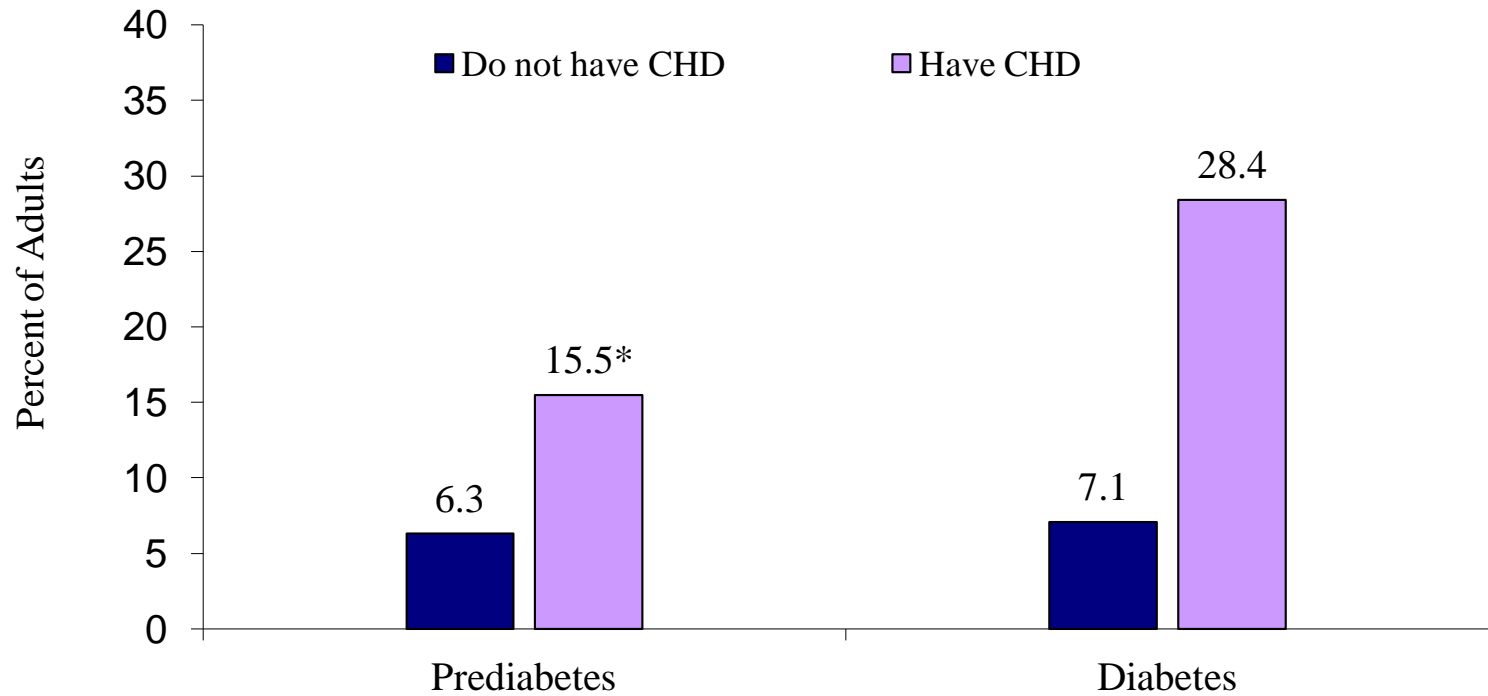


Prediabetes and diabetes do not include pregnancy-related prediabetes and diabetes.

Adults = ages 18+ years.

Data Source: Behavioral Risk Factor Surveillance System.

Figure 2.7 Prediabetes and Diabetes Prevalence by History of Coronary Heart Disease, Maine Adults, 2010



Prediabetes and diabetes do not include pregnancy-related prediabetes and diabetes.

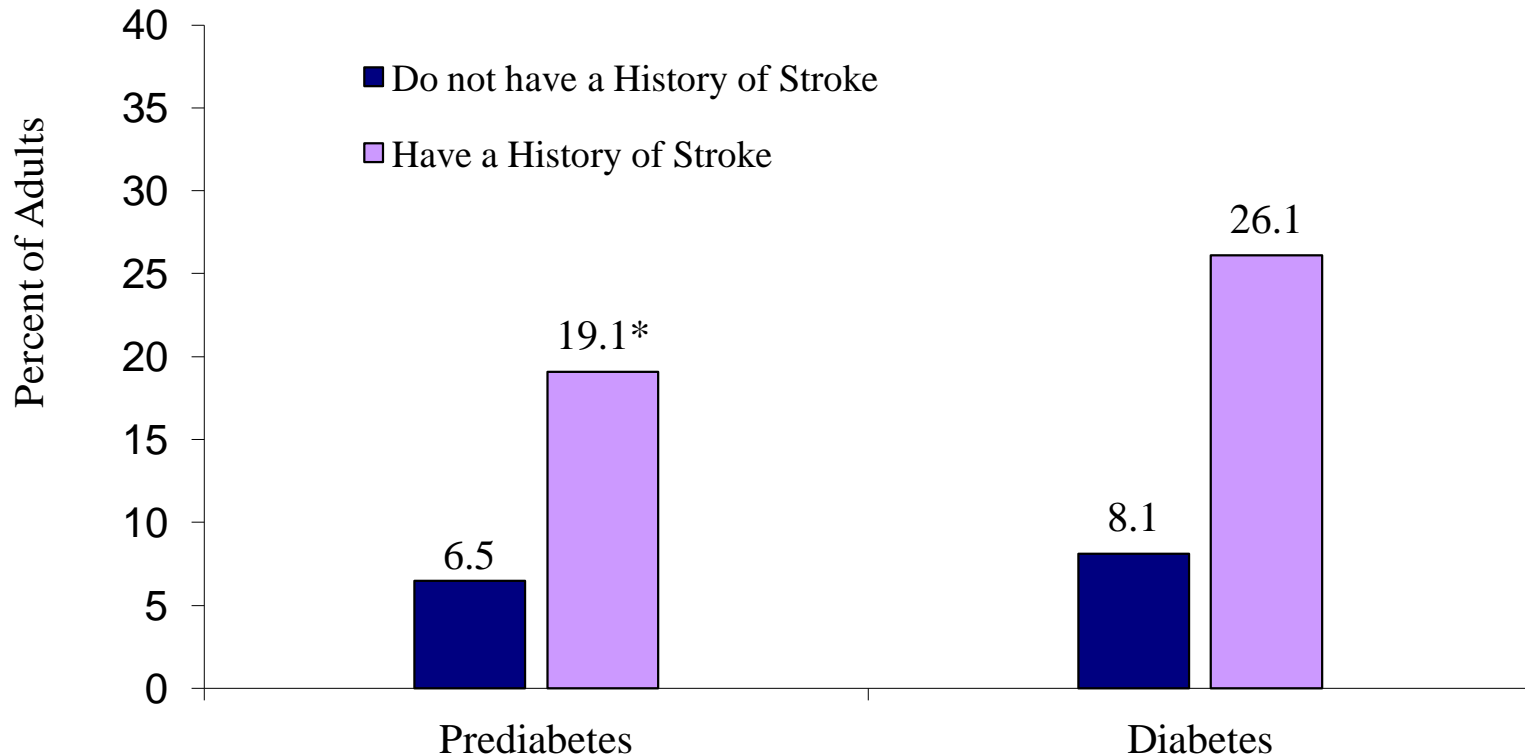
Adults = ages 18+ years.

CHD= Coronary Heart Disease.

*This percentage is based on a numerator < 50 and may be unreliable; please use caution in interpreting.

Data Source: Behavioral Risk Factor Surveillance System.

Figure 2.8 Prediabetes and Diabetes Prevalence by History of Stroke, Maine Adults, 2010



Prediabetes and diabetes do not include pregnancy-related prediabetes and diabetes.

Adults = ages 18+ years.

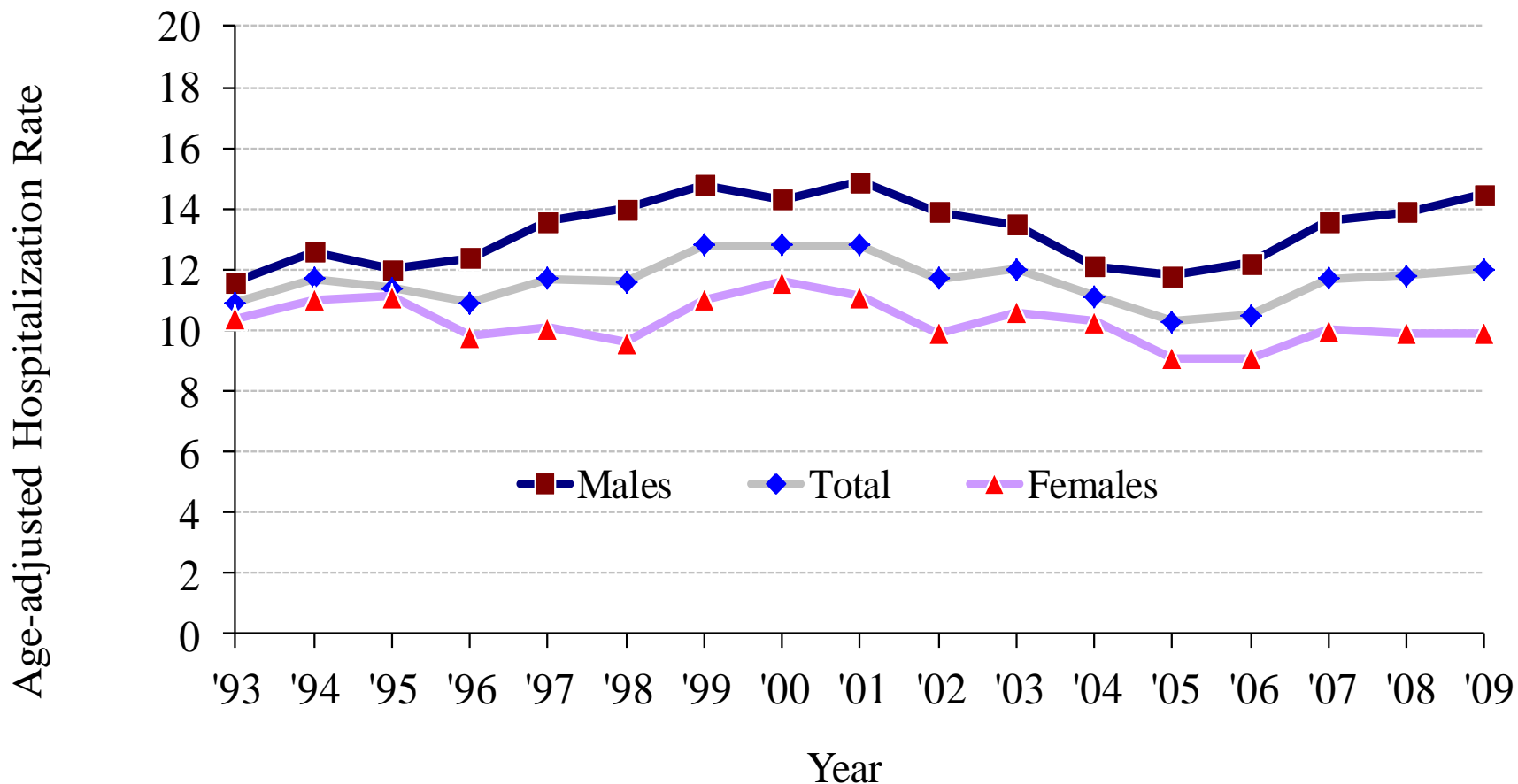
*This percentage is based on a numerator < 50 and may be unreliable; please use caution in interpreting.

Data Source: Behavioral Risk Factor Surveillance System.

Chapter 3

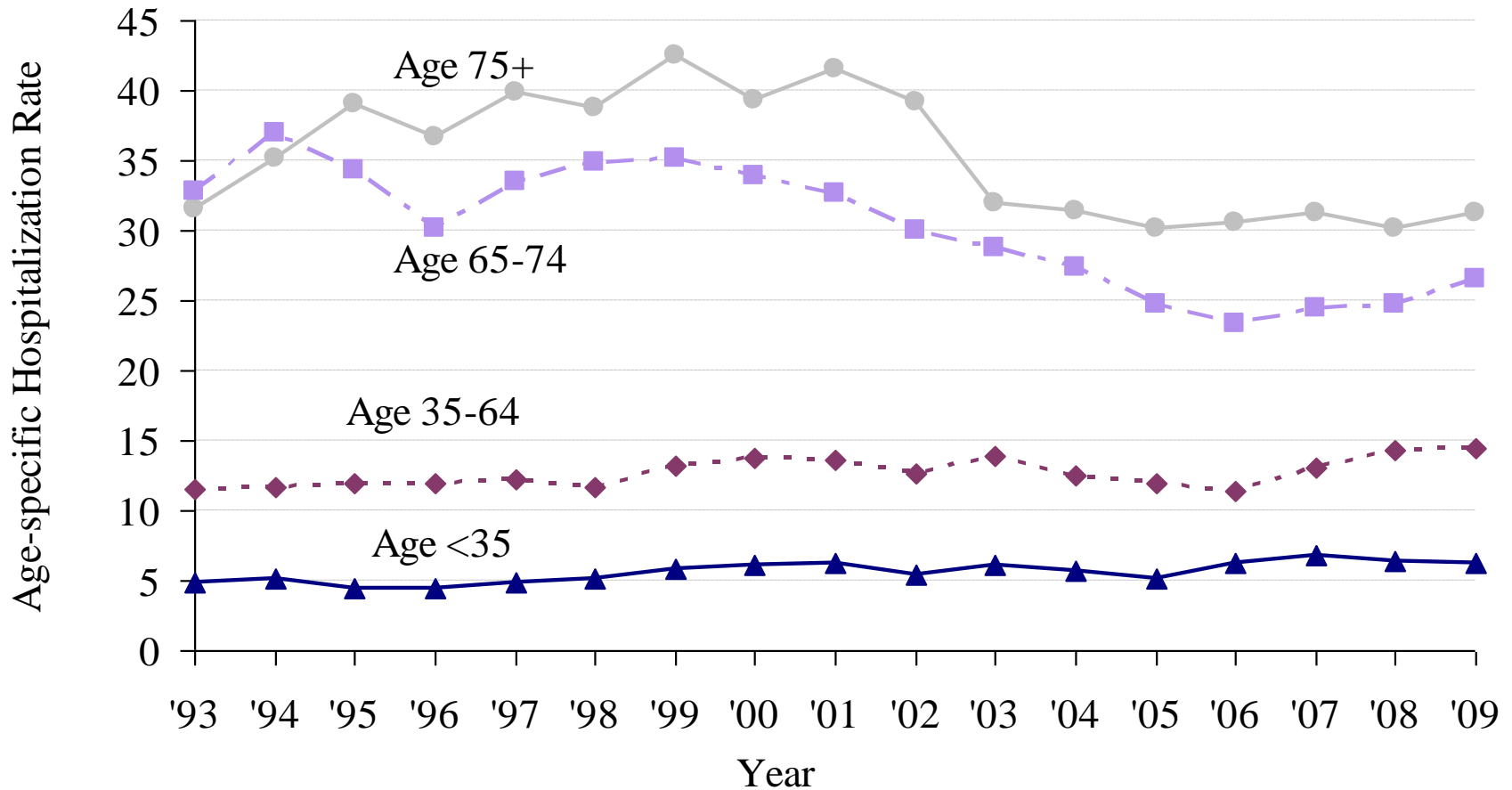
Diabetes and Diabetes-Related Hospitalizations

Figure 3.1 Diabetes Hospitalization Rates by Gender, Maine, 1993-2009



Diabetes Hospitalizations: ICD-9-CM 250; principal diagnosis.
 Rates per 10,000 population, age-adjusted to the year 2000 standard U.S. population.
 Data Source: Maine Inpatient Database, Maine Health Data Organization.

Figure 3.2 Diabetes Hospitalization Rates by Age Group, Maine, 1993-2009

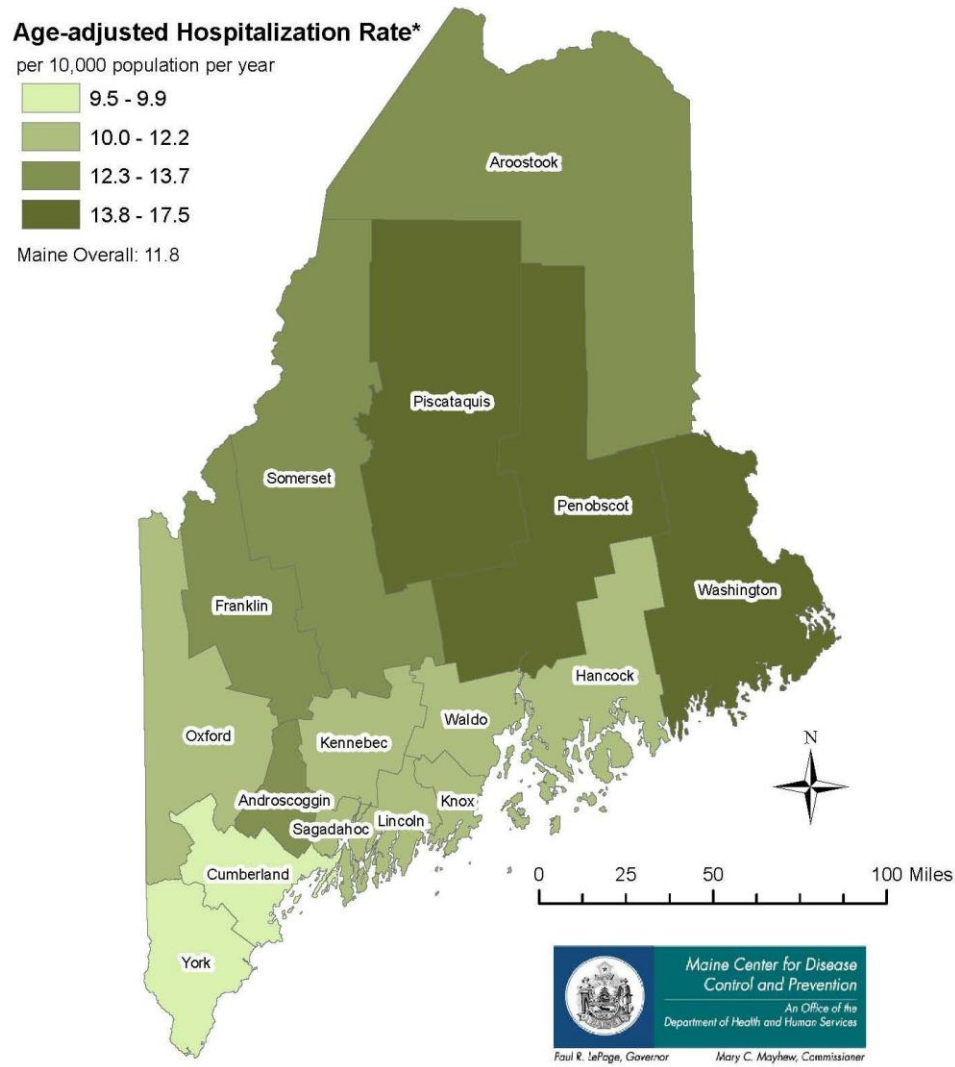


Diabetes Hospitalizations: ICD-9-CM 250; principal diagnosis.

Rates per 10,000 population.

Data Source: Maine Inpatient Database, Maine Health Data Organization.

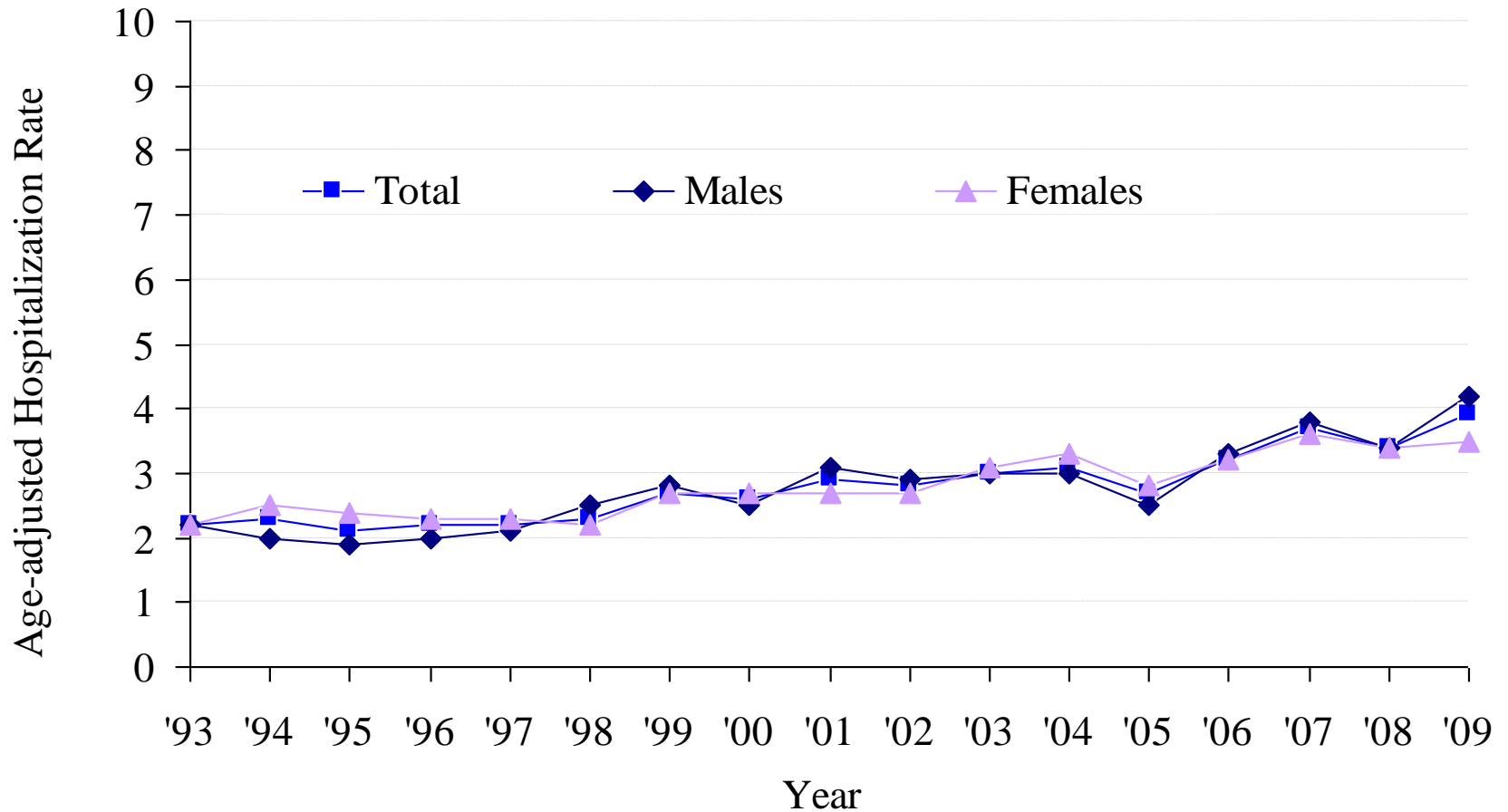
Figure 3.3 Diabetes Hospitalization by County of Residence, Maine Adults, 2007-2009



Data Source: Maine Inpatient Database, Maine Health Data Organization.
Diabetes Hospitalizations: ICD-9-CM 250; principal diagnosis.
*Age-adjusted to the year 2000 standard U.S. population

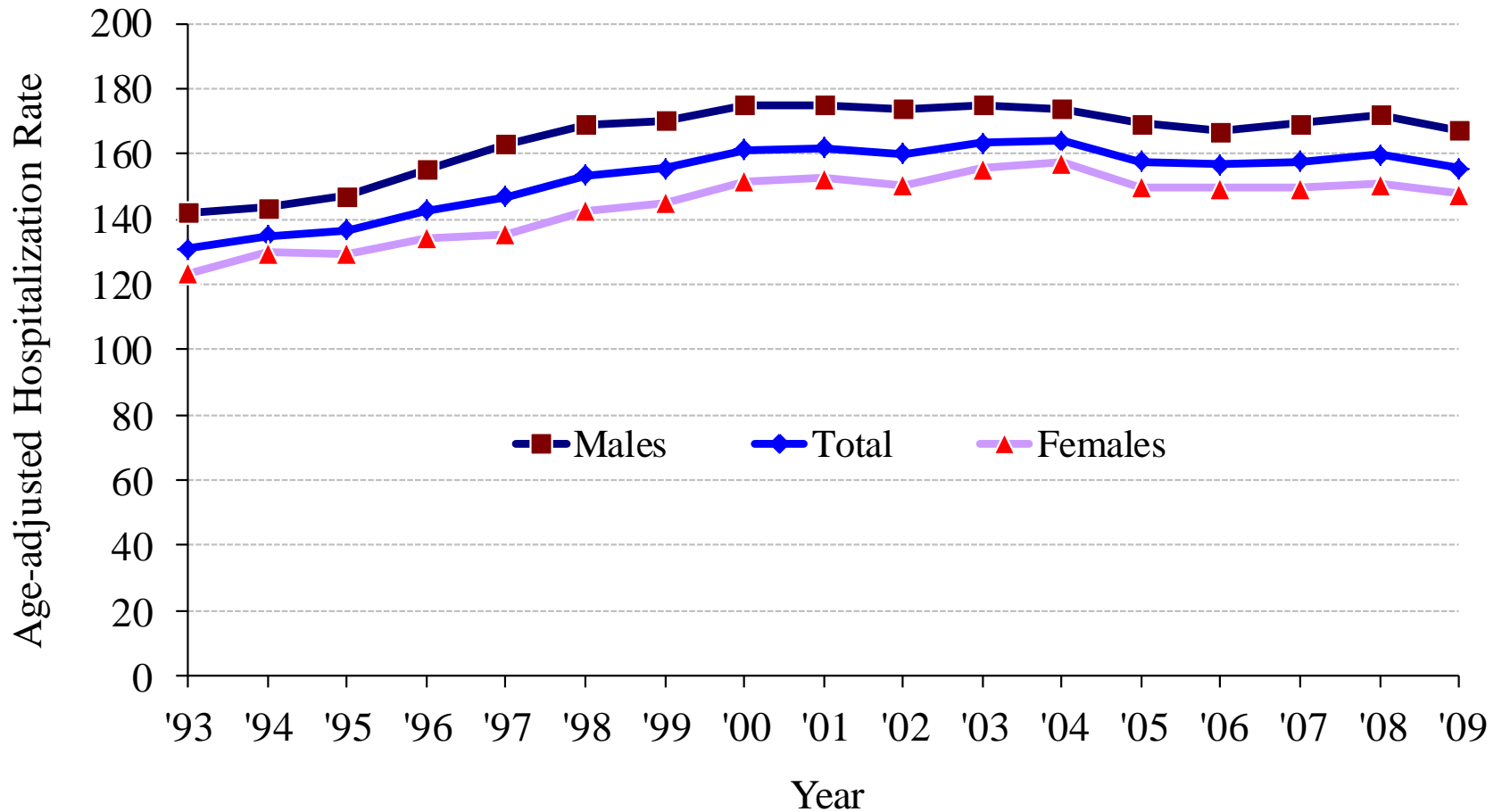
Map Created by David Pied and Nisha Kini on 04/18/2012

Figure 3.4 Diabetic Ketoacidosis Hospitalization Rates by Gender, Maine, 1993-2009



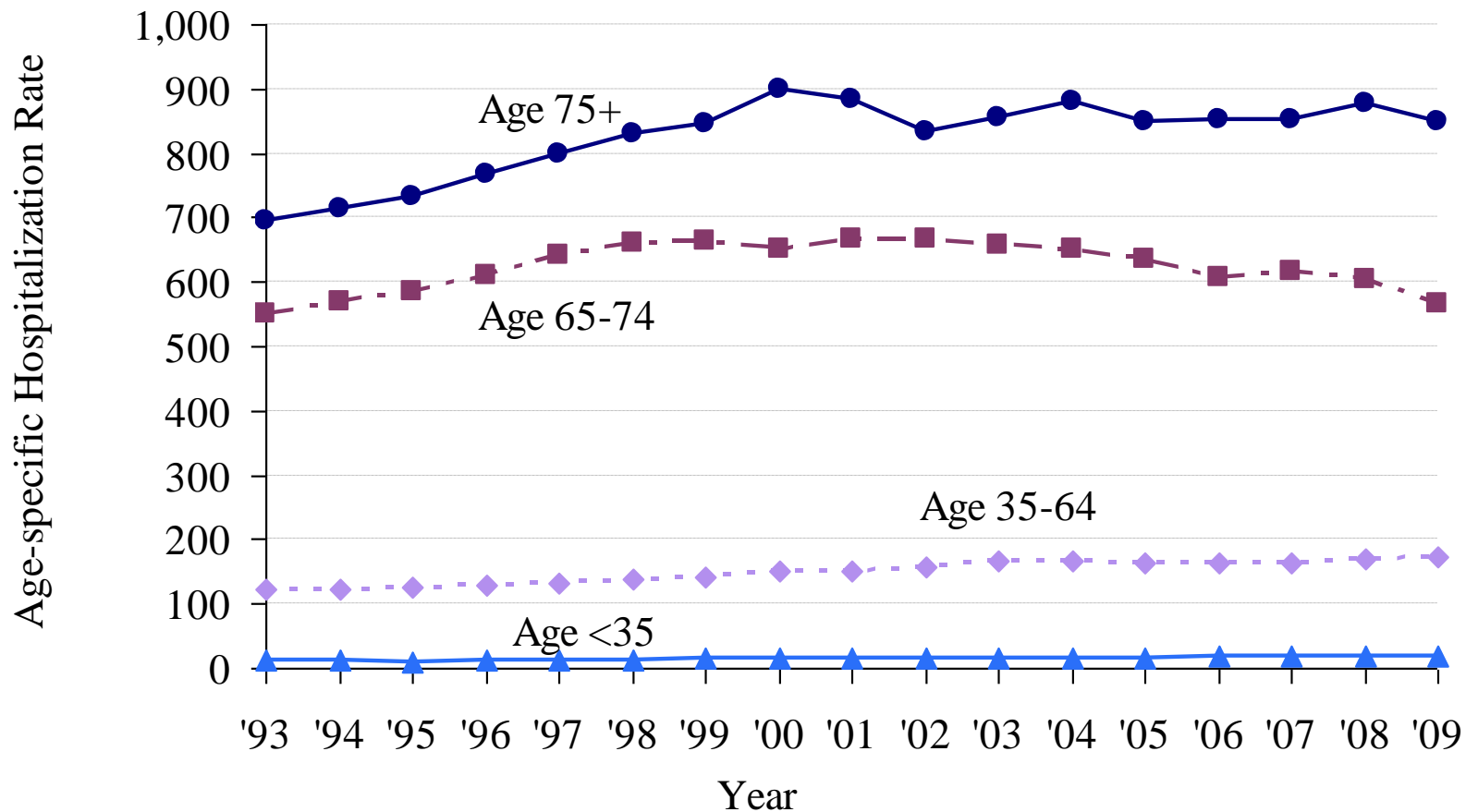
Diabetic Ketoacidosis Hospitalizations: ICD-9-CM code 250.1 as the principal diagnosis.
 Rates per 10,000 population, age-adjusted to the year 2000 standard U.S. population.
 Data Source: Maine Inpatient Database, Maine Health Data Organization.

Figure 3.5 Diabetes-Related Hospitalization Rates by Gender, Maine, 1993-2009



Diabetes-Related Hospitalizations: ICD-9-CM 250; any listed diagnosis.
 Rates per 10,000 population, age-adjusted to the year 2000 standard U.S. population.
 Data Source: Maine Inpatient Database, Maine Health Data Organization.

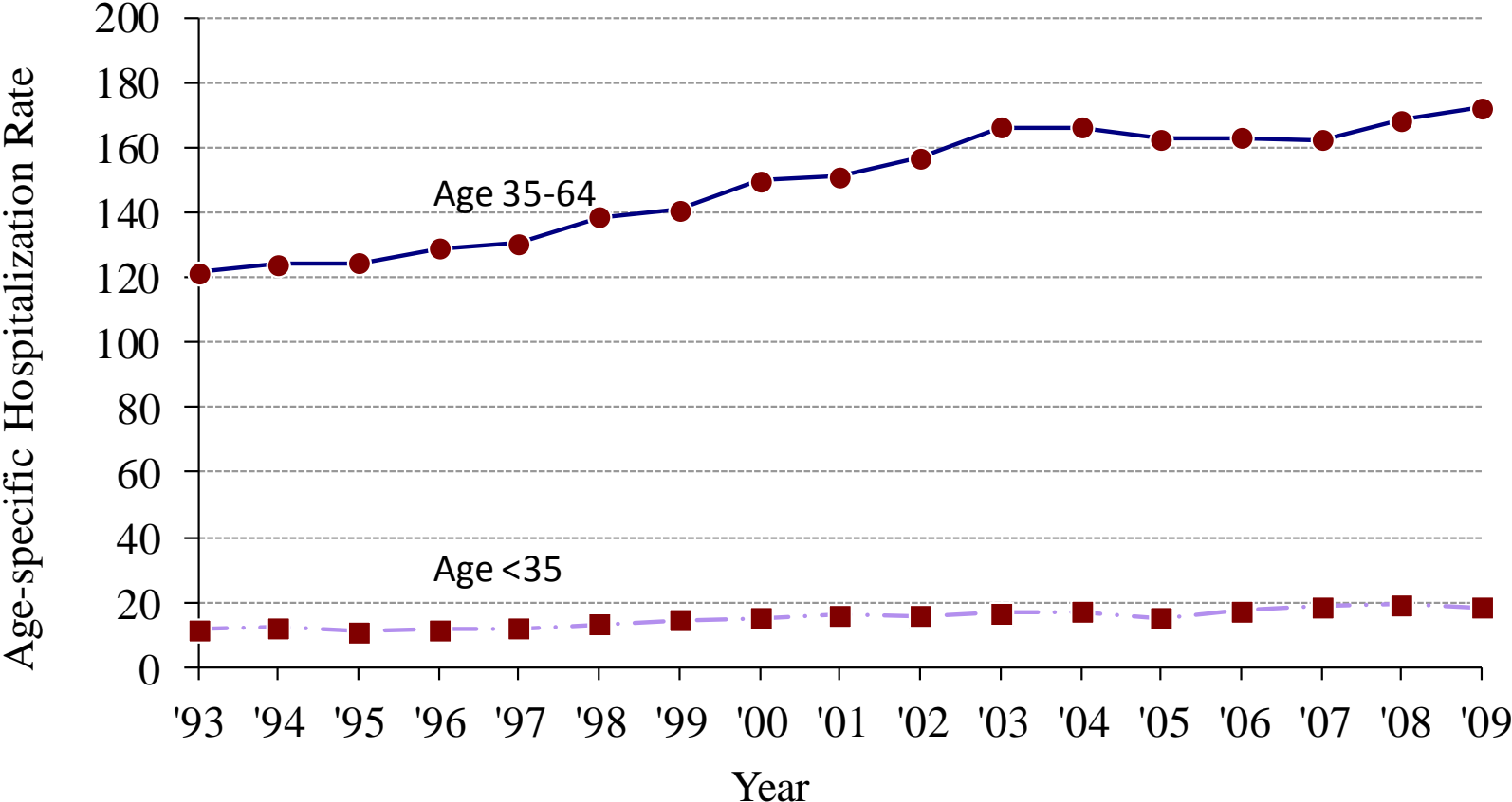
Figure 3.6a Diabetes-Related Hospitalization Rates by Age Group, Maine, 1993-2009



Diabetes-Related Hospitalizations: ICD-9-CM 250; any listed diagnosis.
 Rates per 10,000 population.

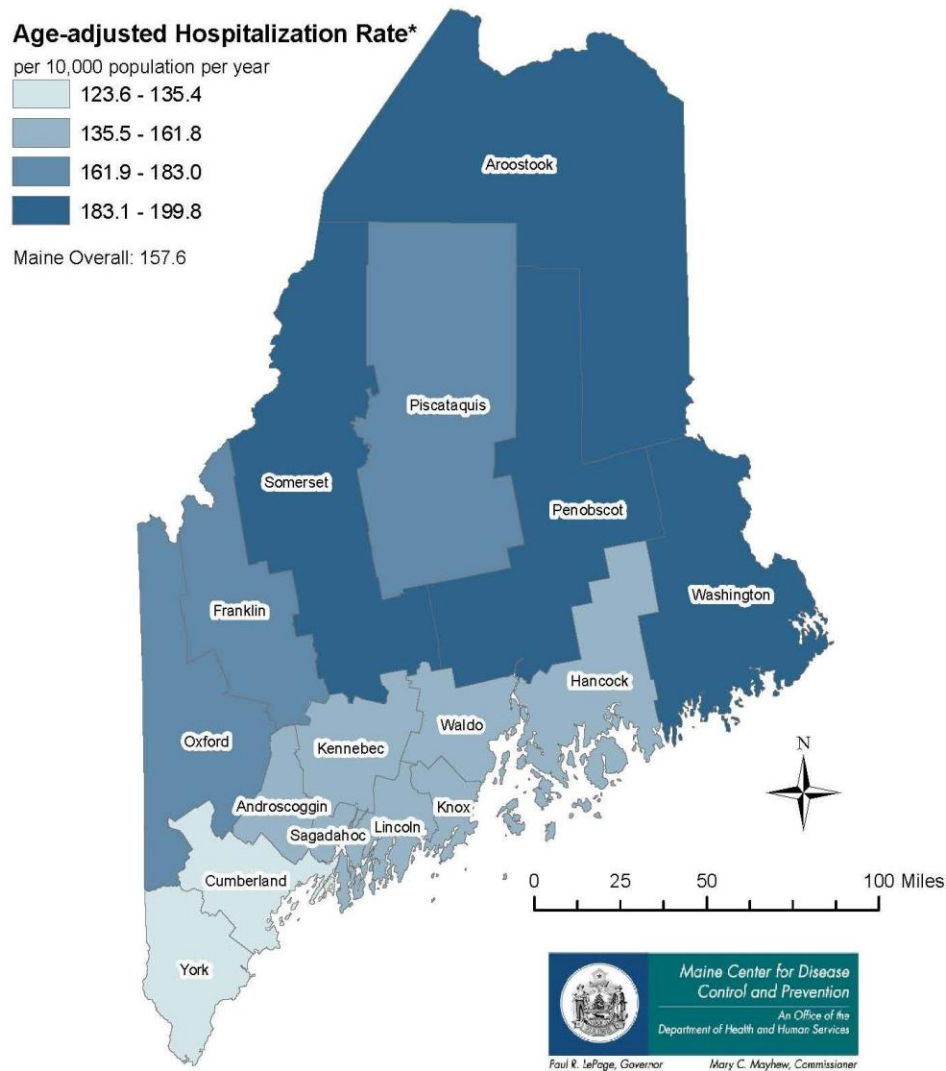
Data Source: Maine Inpatient Database, Maine Health Data Organization.

Figure 3.6b Diabetes-Related Hospitalization Rates by Age Group (zoomed in), Maine, 1993-2009



Diabetes-Related Hospitalizations: ICD-9-CM 250; any listed diagnosis.
 Rates per 10,000 population.
 Data Source: Maine Inpatient Database, Maine Health Data Organization.

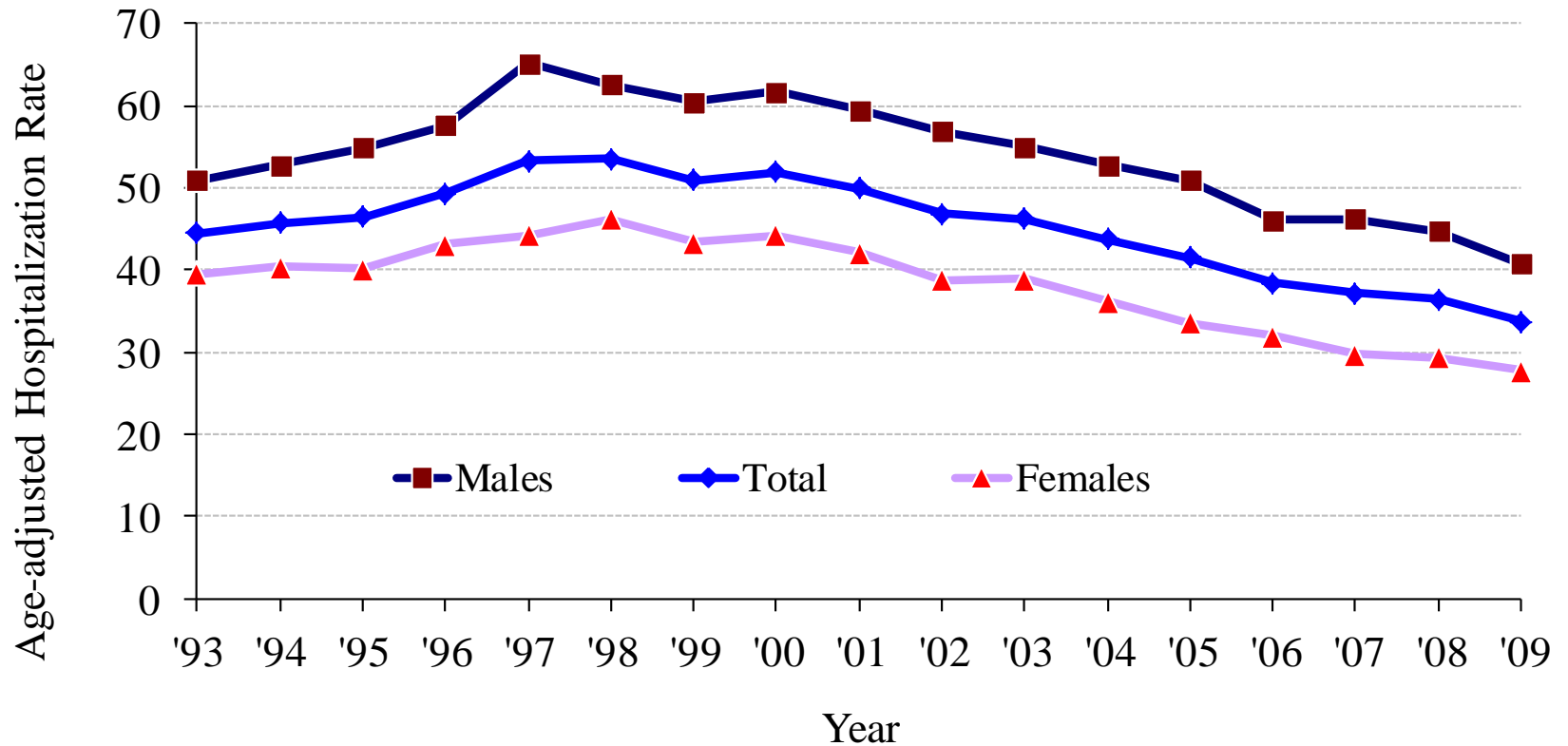
Figure 3.7 Diabetes-Related Hospitalization Rates, by County of Residence, Maine 2007-2009



Data Source: Maine Inpatient Database, Maine Health Data Organization.
Diabetes-Related Hospitalizations: ICD-9-CM 250; any listed diagnosis.
*Age-adjusted to the year 2000 standard U.S. population

Map Created by David Pied and Nisha Kini on 04/18/2012

Figure 3.8 Diabetes-Related Cardiovascular Disease Hospitalization Rates by Gender, Maine, 1993-2009

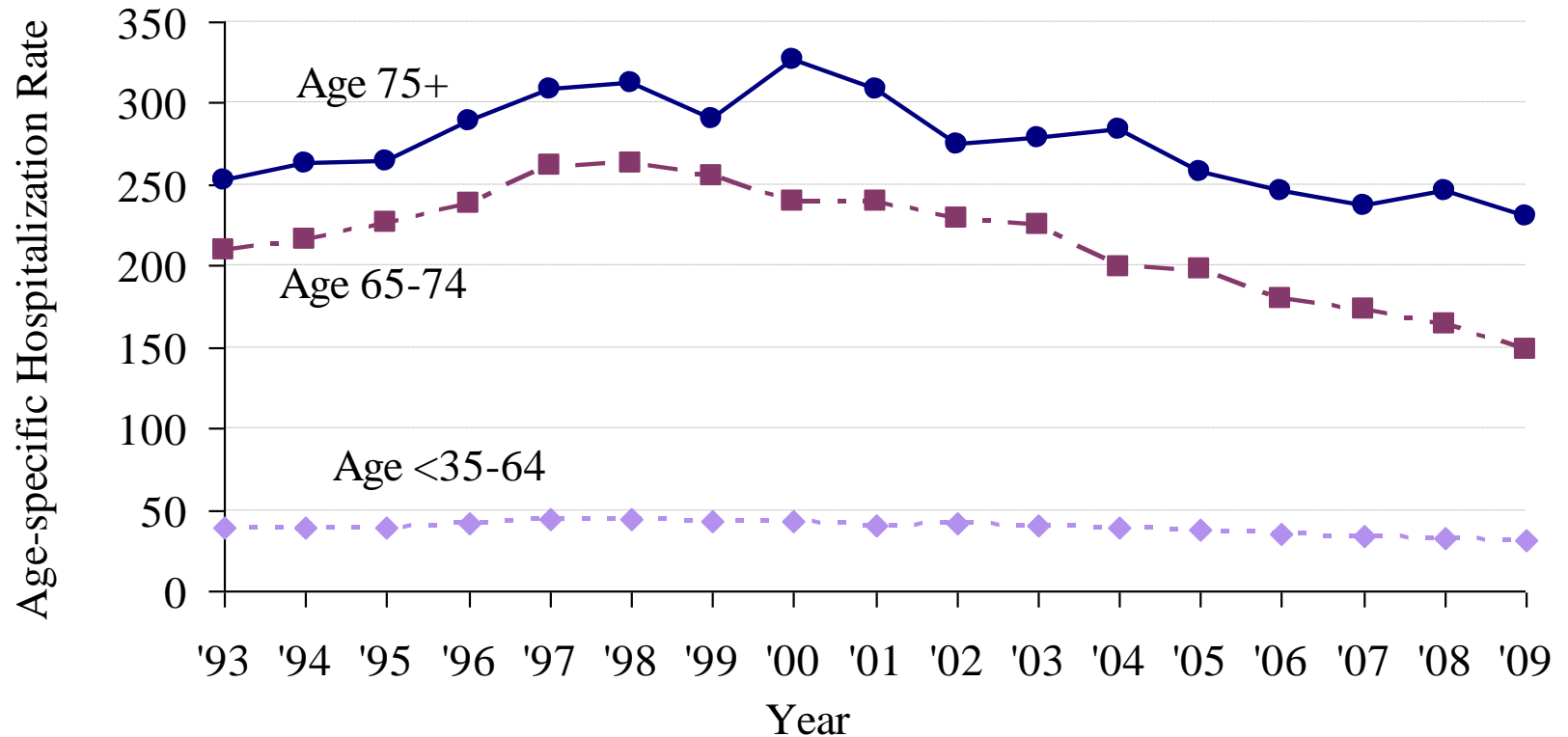


Cardiovascular Disease: ICD-9-CM codes 390-434, 436-448; principal diagnosis and diabetes (ICD-9-CM code 250) as other listed diagnosis.

Rates per 10,000 population, age-adjusted to the year 2000 standard U.S. population.

Data Source: Maine Inpatient Database, Maine Health Data Organization.

Figure 3.9 Diabetes-Related Cardiovascular Disease Hospitalization Rates by Age Group, Maine, 1993-2009



Cardiovascular Disease: ICD-9-CM codes 390-434, 436-448; principal diagnosis and diabetes (ICD-9-CM code 250) as other listed diagnosis.

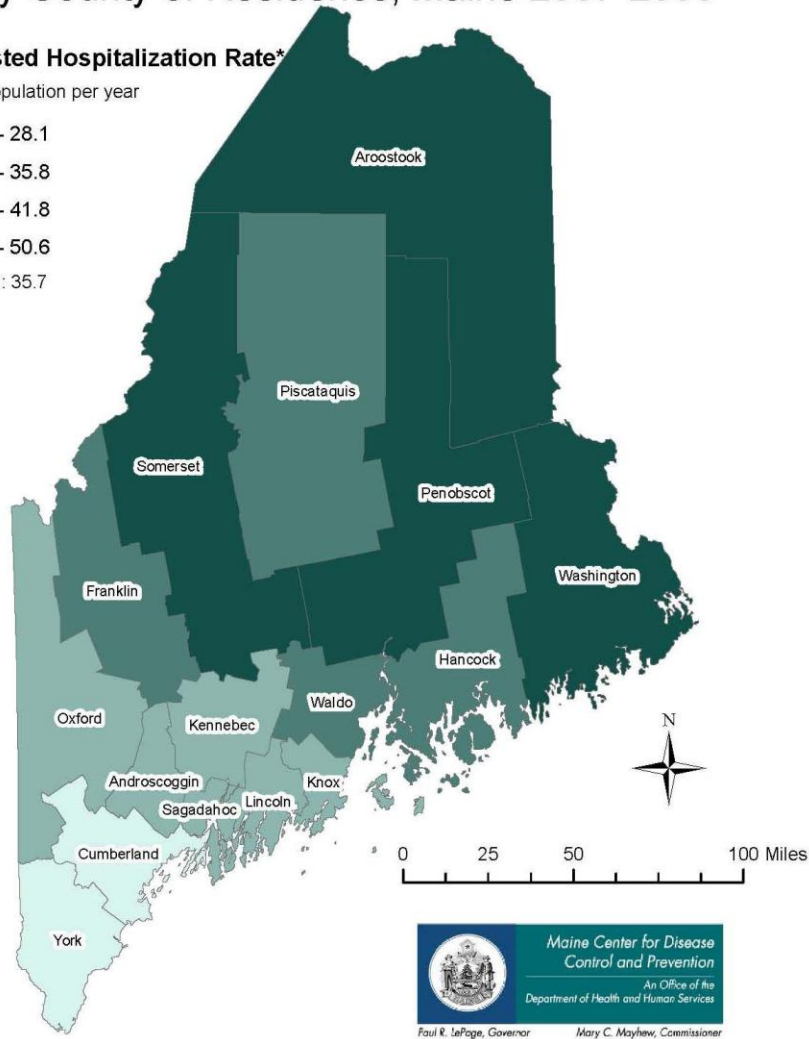
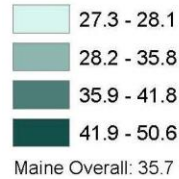
Rates per 10,000 population.

Data Source: Maine Inpatient Database, Maine Health Data Organization.

Figure 3.10 Diabetes-Related Cardiovascular Disease Hospitalization Rates, by County of Residence, Maine 2007-2009

Age-adjusted Hospitalization Rate*

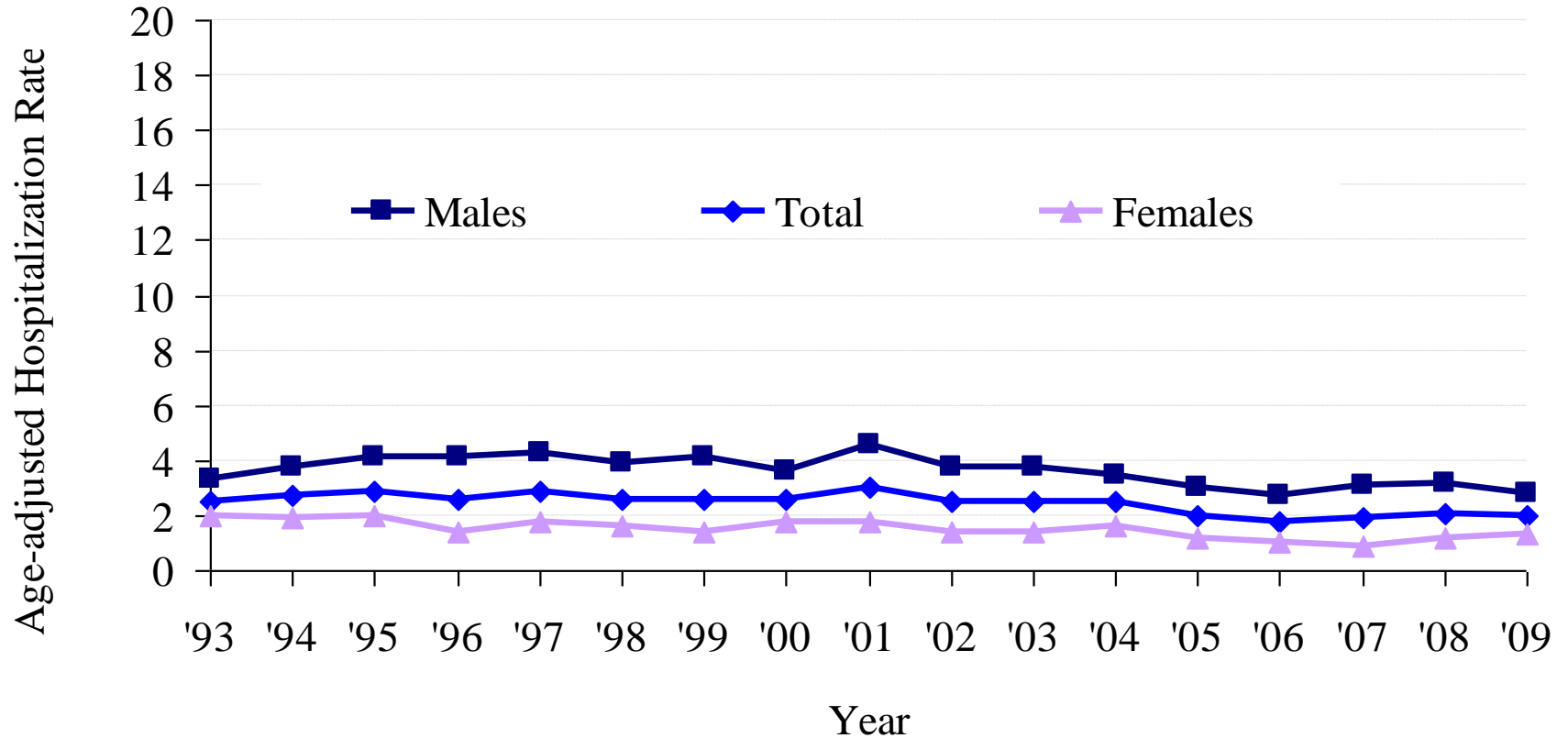
per 10,000 population per year



Data Source: Maine Inpatient Database, Maine Health Data Organization.
 Cardiovascular Disease: ICD-9-CM codes 390-434, 436-448; principal diagnosis and diabetes (ICD-9-CM code 250) as other listed diagnosis.
 *Age-adjusted to the year 2000 standard U.S. population.

Map Created by David Pied and Nisha Kini on 04/18/2012

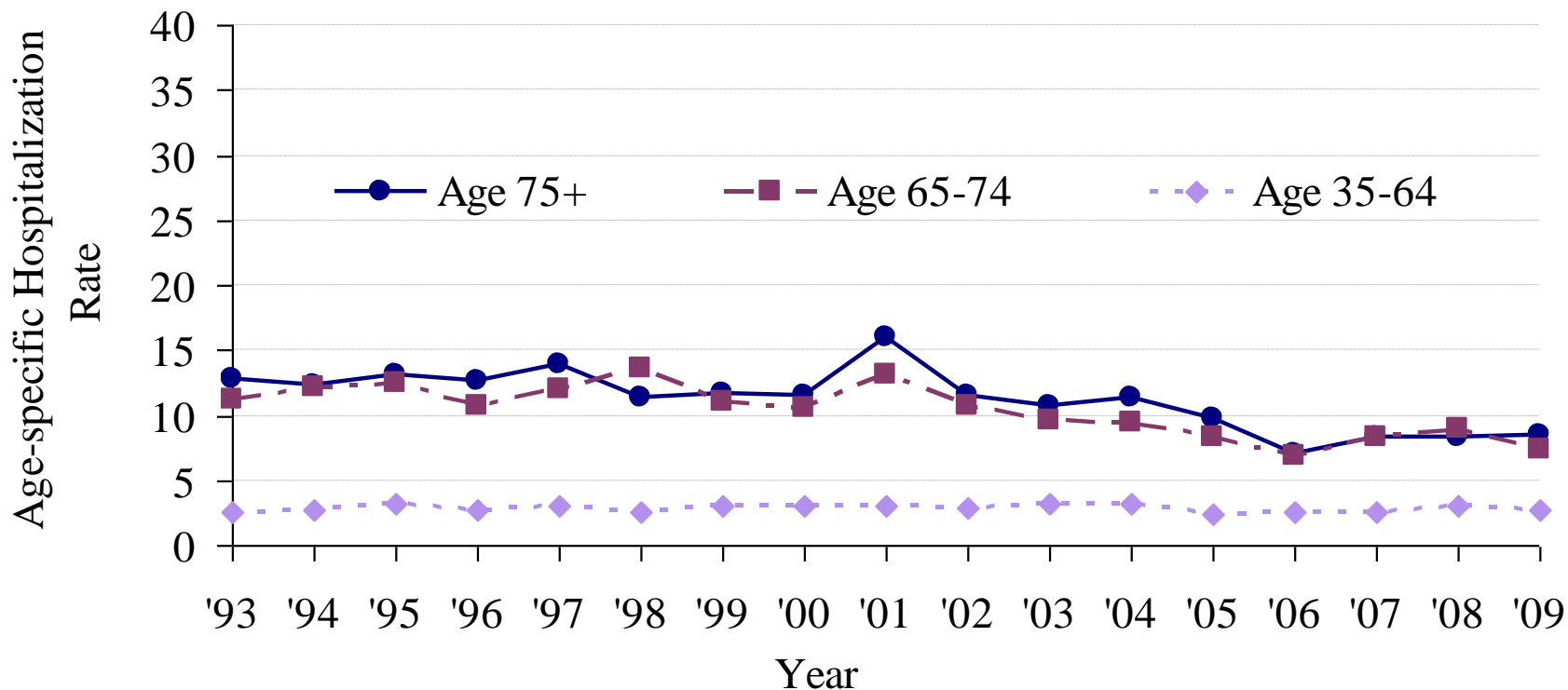
Figure 3.11 Diabetes-Related Non-Traumatic Lower Extremity Amputation Hospitalization Rates by Gender, Maine, 1993-2009



Diabetes-Related Non-traumatic Lower Extremity Amputation: Hospitalizations with diabetes (ICD-9-CM code 250) as any listed diagnosis and amputation of the lower limb (ICD-9-CM procedure code 84.1) as any listed procedure and not having ICD-9-CM codes 895–897 (traumatic amputation). Rates per 10,000 population, age-adjusted to the year 2000 standard U.S. population.

Data Source: Maine Inpatient Database, Maine Health Data Organization.

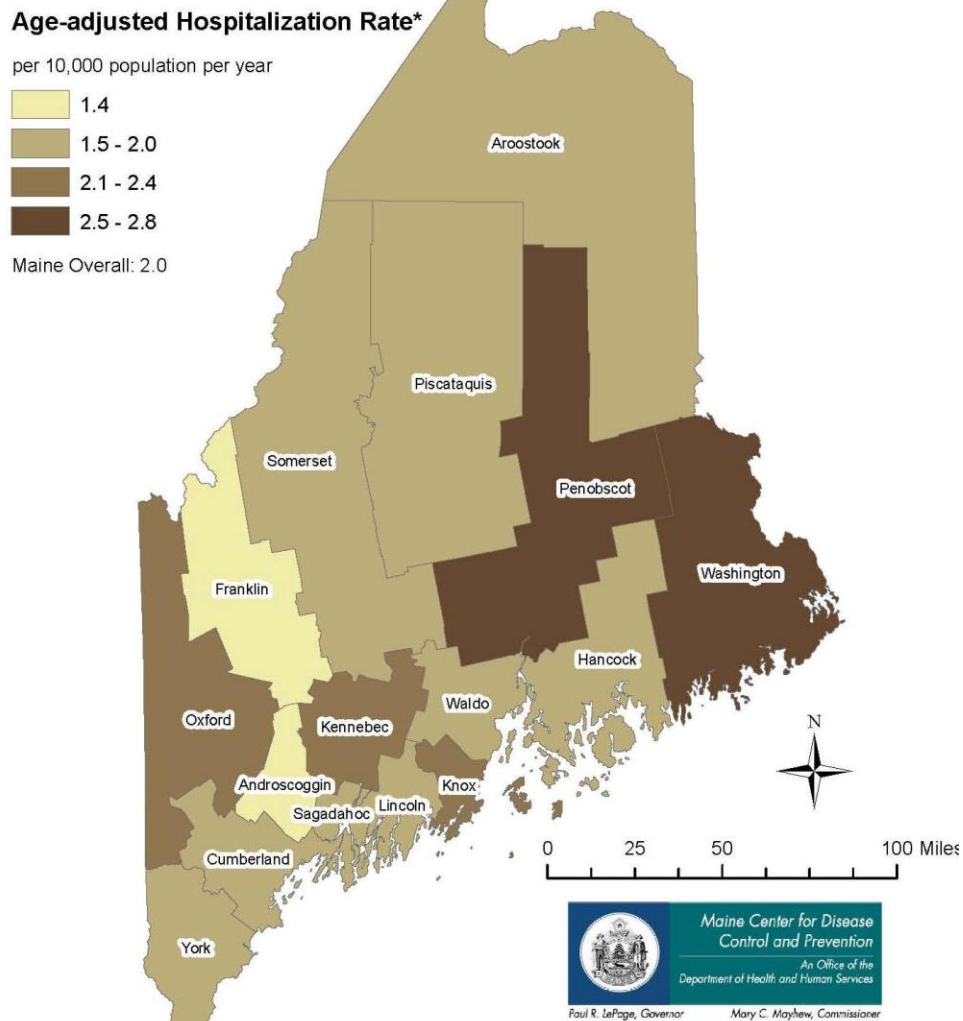
Figure 3.12 Diabetes-Related Non-Traumatic Lower Extremity Hospitalization Rates by Age Group, Maine, 1993-2009



Diabetes-Related Non-traumatic Lower Extremity Amputation: Hospitalizations with diabetes (ICD-9-CM code 250) as any listed diagnosis and amputation of the lower limb (ICD-9-CM procedure code 84.1) as any listed procedure and not having ICD-9-CM codes 895–897 (traumatic amputation).
 Rates per 10,000 population.

Data Source: Maine Inpatient Database, Maine Health Data Organization.

Figure 3.13 Diabetes-Related Non-traumatic Lower Extremity Amputation Hospitalization Rates, by County of Residence, Maine 2007-2009



Data Source: Maine Inpatient Database, Maine Health Data Organization.

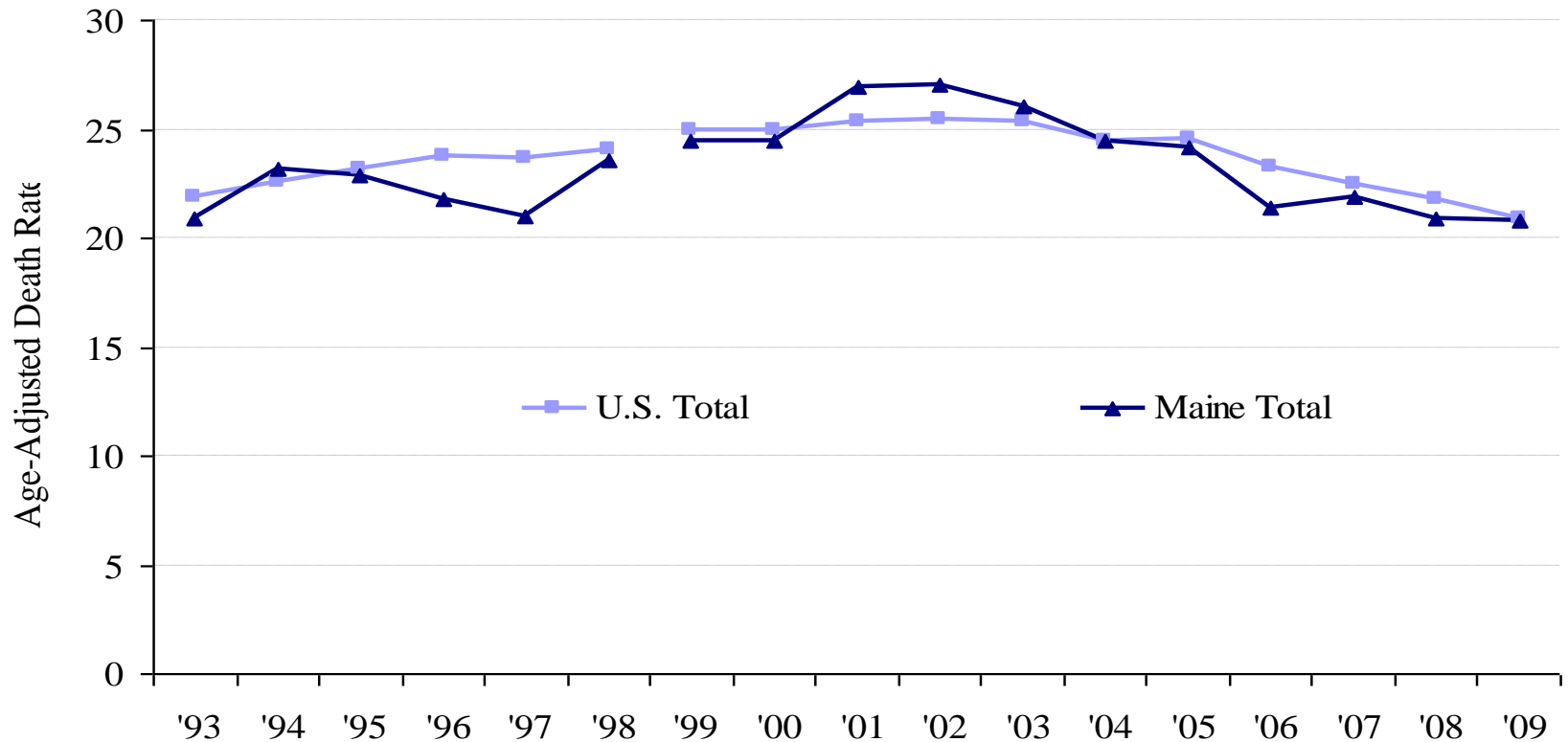
Non-traumatic Lower Extremity Amputation: Hospitalizations with diabetes (ICD-9-CM code 250) as any listed diagnosis and amputation of the lower limb (ICD-9-CM procedure code 84.1) as any listed procedure and not having ICD-9-CM codes 895-897 (traumatic amputation)

*Age-adjusted to the year 2000 standard U.S. population.
Map Created by David Pied and Nisha Kini on 04/18/2012

Chapter 4

Diabetes and Diabetes-Related Death

Figure 4.1 Diabetes Death Rates by Year, Maine and U.S., 1993-2009



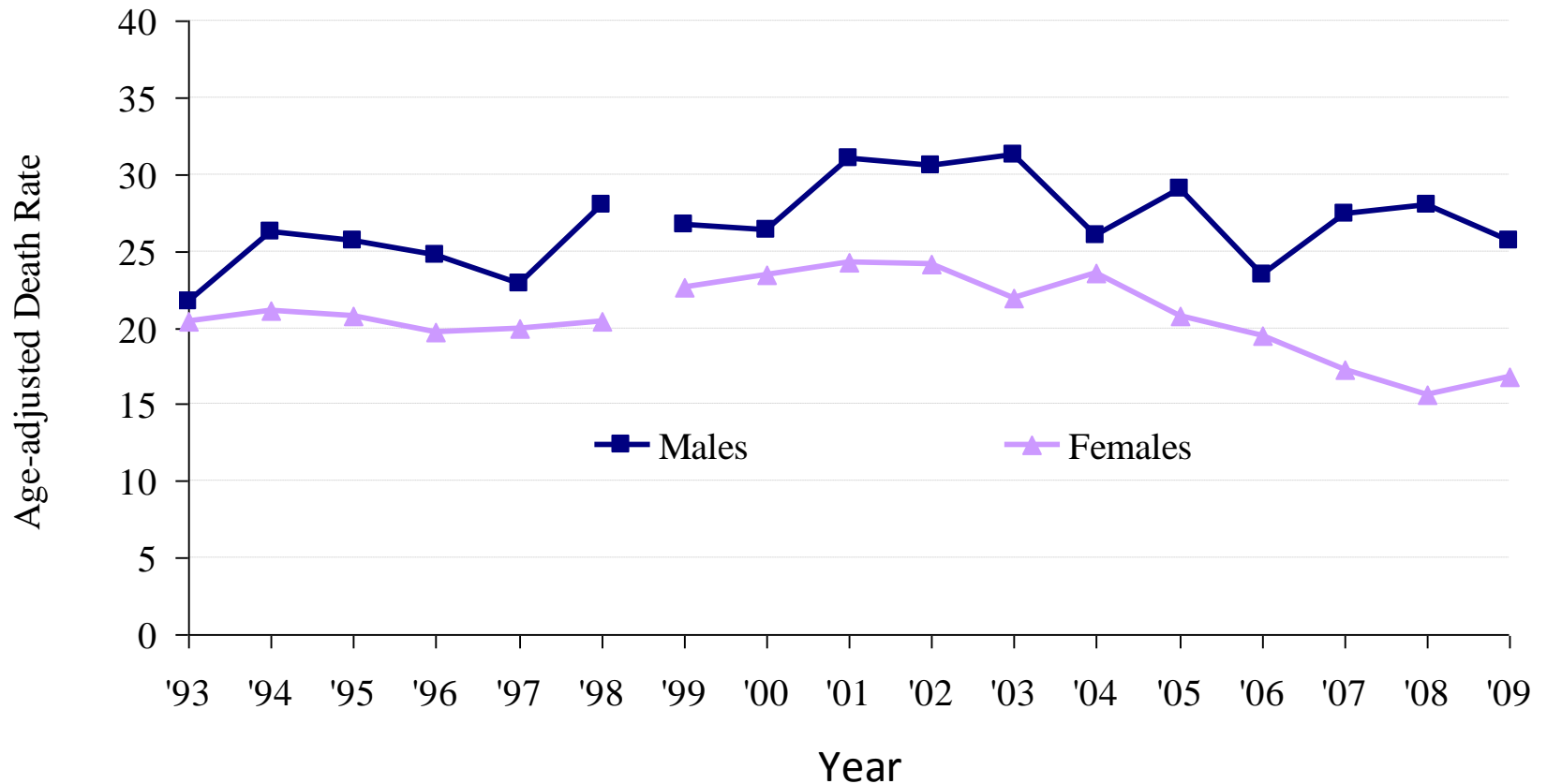
Diabetes Deaths: 1999-2009: ICD-10 codes E10–E14; 1993-1998 ICD-9 code 250; underlying cause of death.

Change in ICD code represented by break in graph line.

Rates per 100,000 population, age-adjusted to the year 2000 standard U.S. population.

Data Source: U.S. data-CDC Wonder, Maine data- Data, Research and Vital Statistics, Maine CDC.

Figure 4.2 Diabetes Death Rates by Gender, Maine, 1993-2009



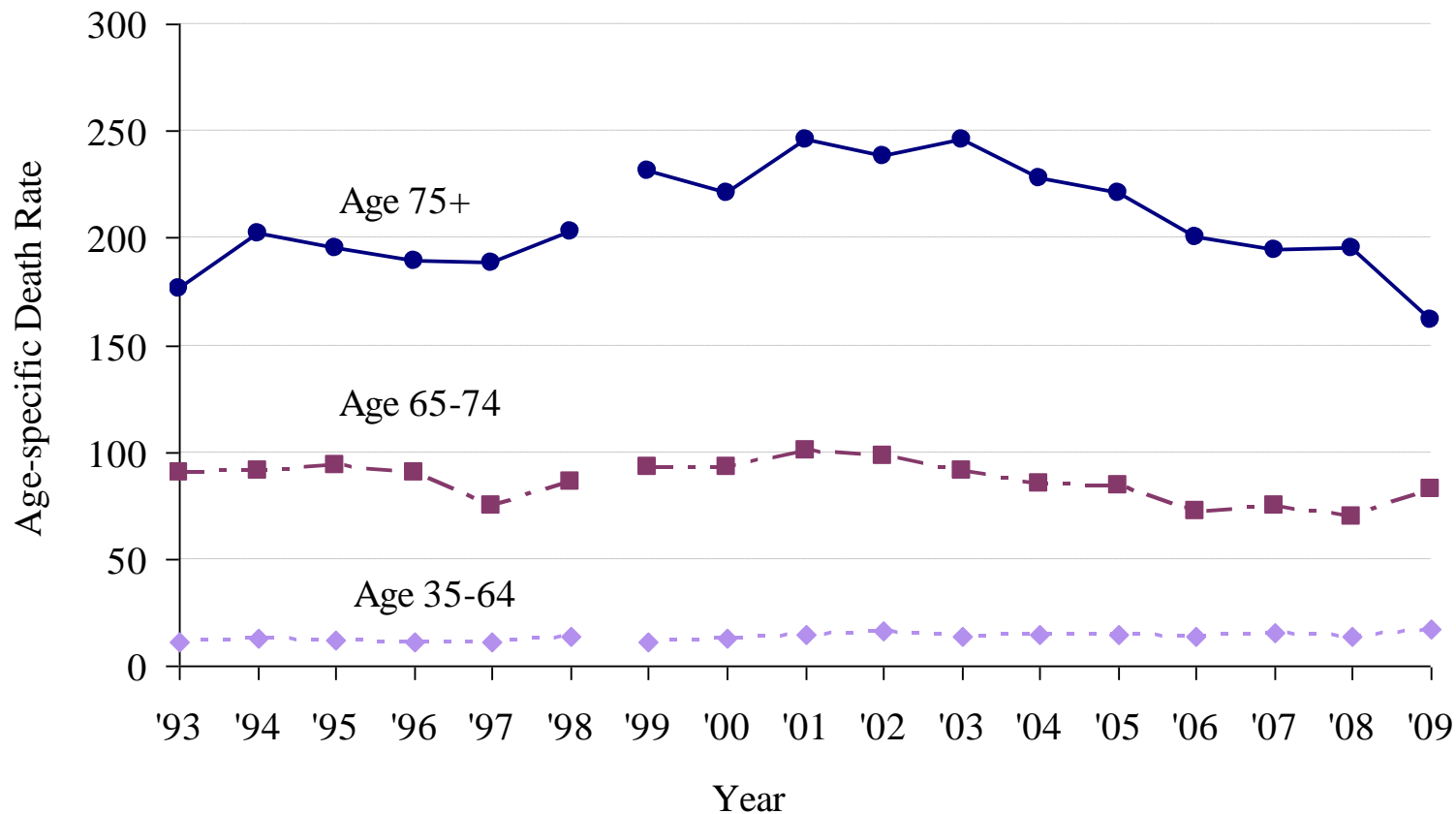
Diabetes Deaths: 1999-2009: ICD-10 codes E10–E14; 1993-1998 ICD-9 code 250; underlying cause of death.

Change in ICD code represented by break in graph line.

Rates per 100,000 population, age-adjusted to the year 2000 standard U.S. population.

Data Source: Data, Research and Vital Statistics, Maine CDC.

Figure 4.3 Diabetes Death Rate by Age Group, Maine, 1993-2009



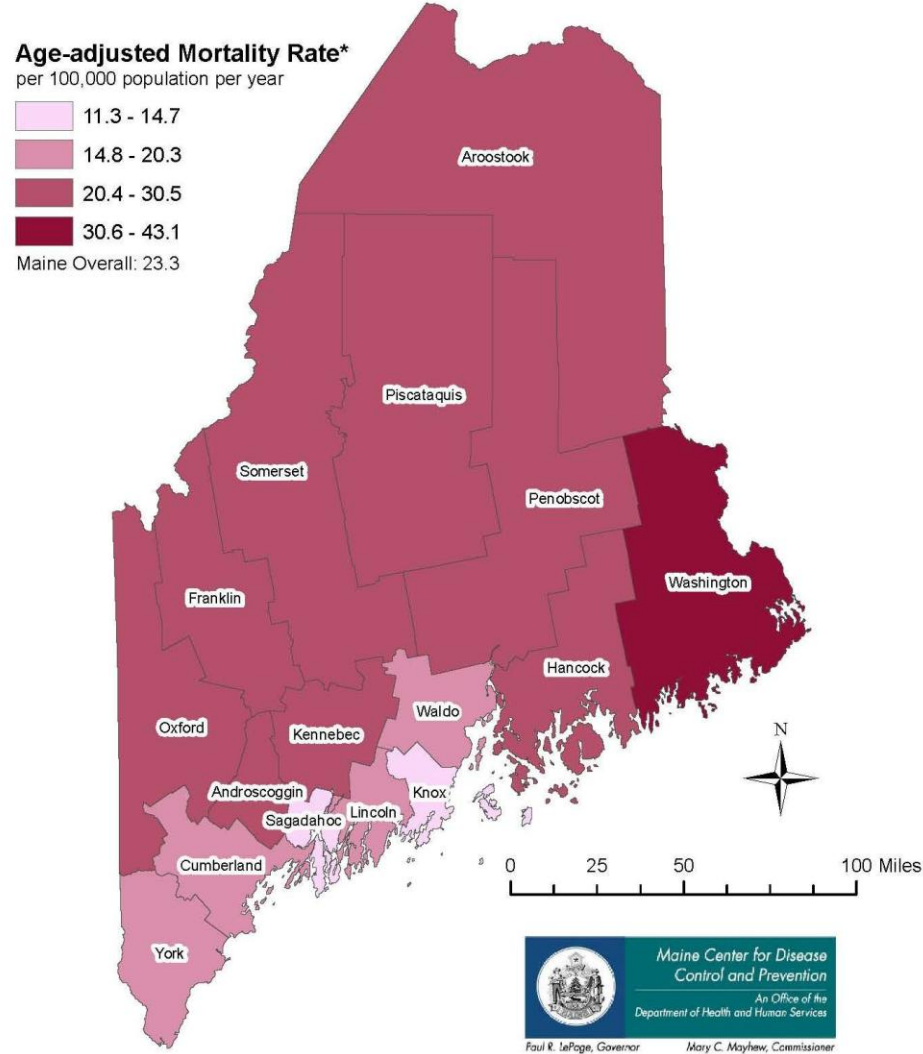
Diabetes Deaths: 1999-2009: ICD-10 codes E10–E14; 1993-1998 ICD-9 code 250; underlying cause of death.

Change in ICD code represented by break in graph line.

Rates per 100,000 population.

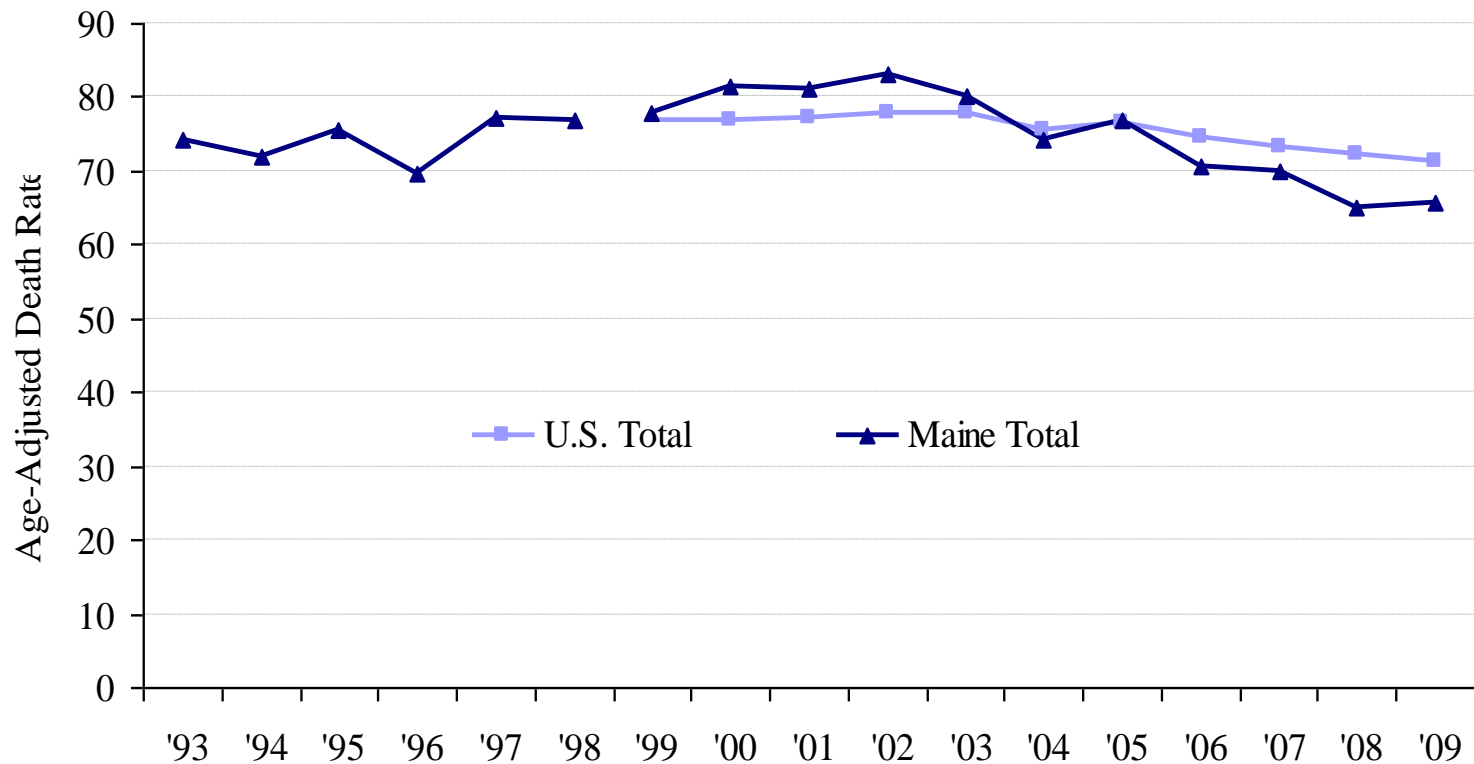
Data Source: Data, Research and Vital Statistics, Maine CDC.

Figure 4.4 Diabetes Death Rates, by County of Residence, Maine 2005-2009



Data Source: Maine Mortality Data; Data Research and Vital Statistics, Maine CDC.
Diabetes Deaths: ICD-10 codes E10-E14; underlying cause of death.
*Age-adjusted to the year 2000 standard U.S. population
Map Created by David Pied and Nisha Kini on 04/18/2012

Figure 4.5 Diabetes-Related Death Rates by Year, Maine and U.S., 1993-2009



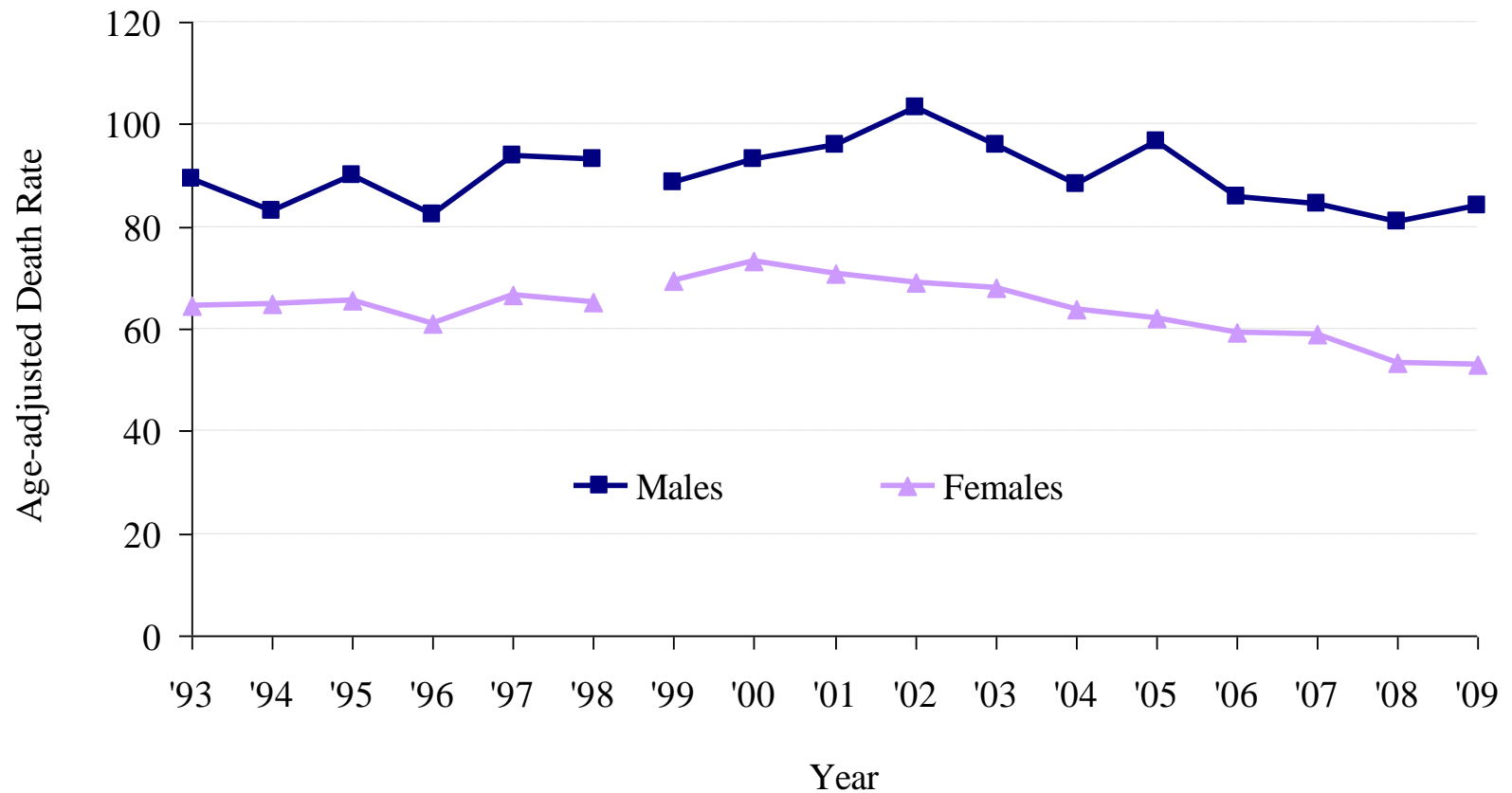
Diabetes-Related Deaths: 1999-2009: ICD-10 codes E10–E14; 1993-1998 ICD-9 code 250; underlying or contributing cause of death.

Change in ICD code represented by break in graph line.

Rates per 100,000 population, age-adjusted to the year 2000 standard U.S. population.

Data Source: U.S. data-CDC Wonder, Maine data- Data, Research and Vital Statistics, Maine CDC.

Figure 4.6 Diabetes-Related Death Rates by Gender, Maine, 1993-2009



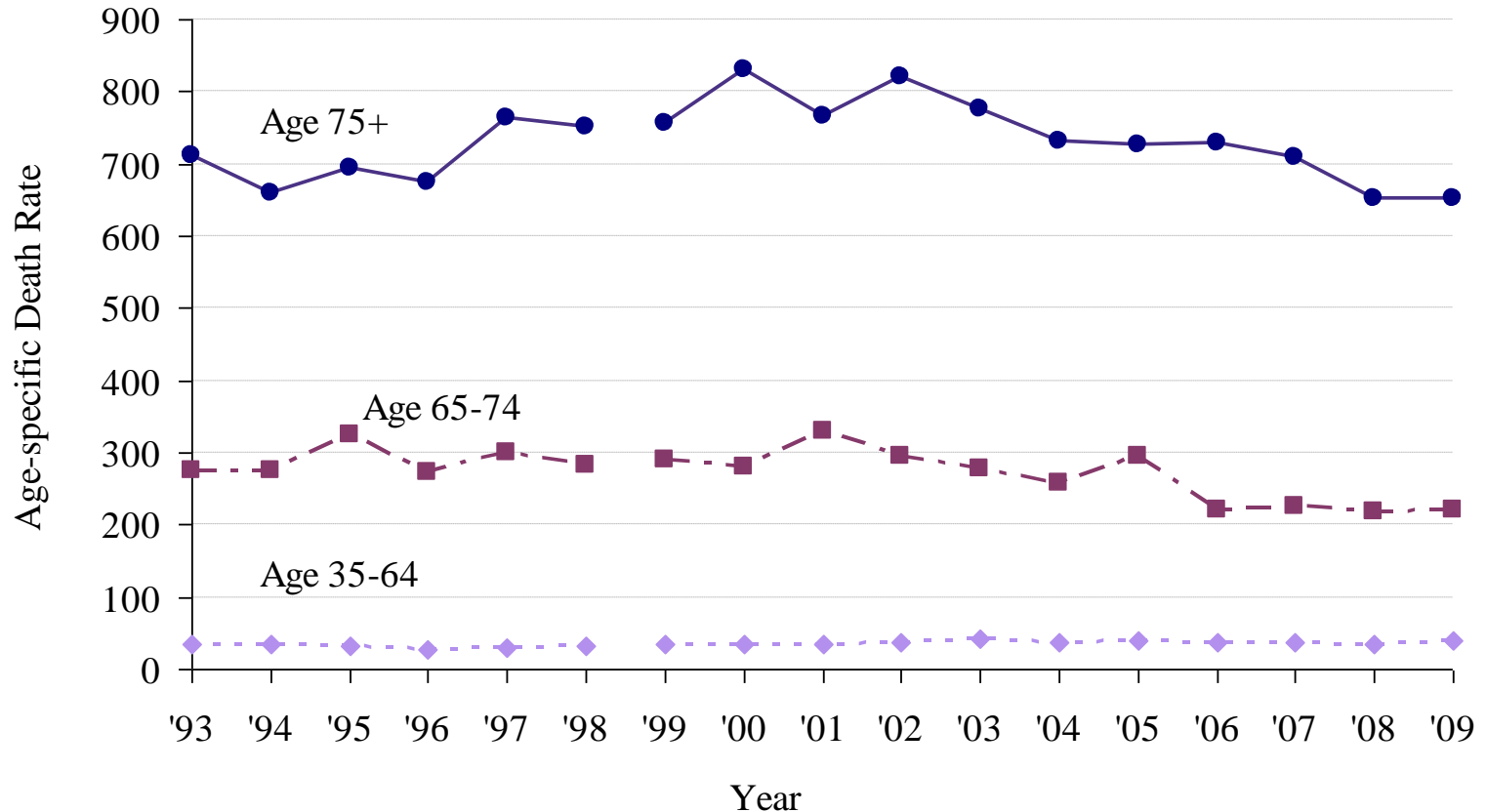
Diabetes-Related Deaths: 1999-2009: ICD-10 codes E10–E14; 1993-1998 ICD-9 code 250; underlying or contributing cause of death.

Change in ICD code represented by break in graph line.

Rates per 100,000 population, age-adjusted to the year 2000 standard U.S. population.

Data Source: Data, Research and Vital Statistics, Maine CDC.

Figure 4.7 Diabetes-Related Death Rate by Age Group, Maine, 1993-2009



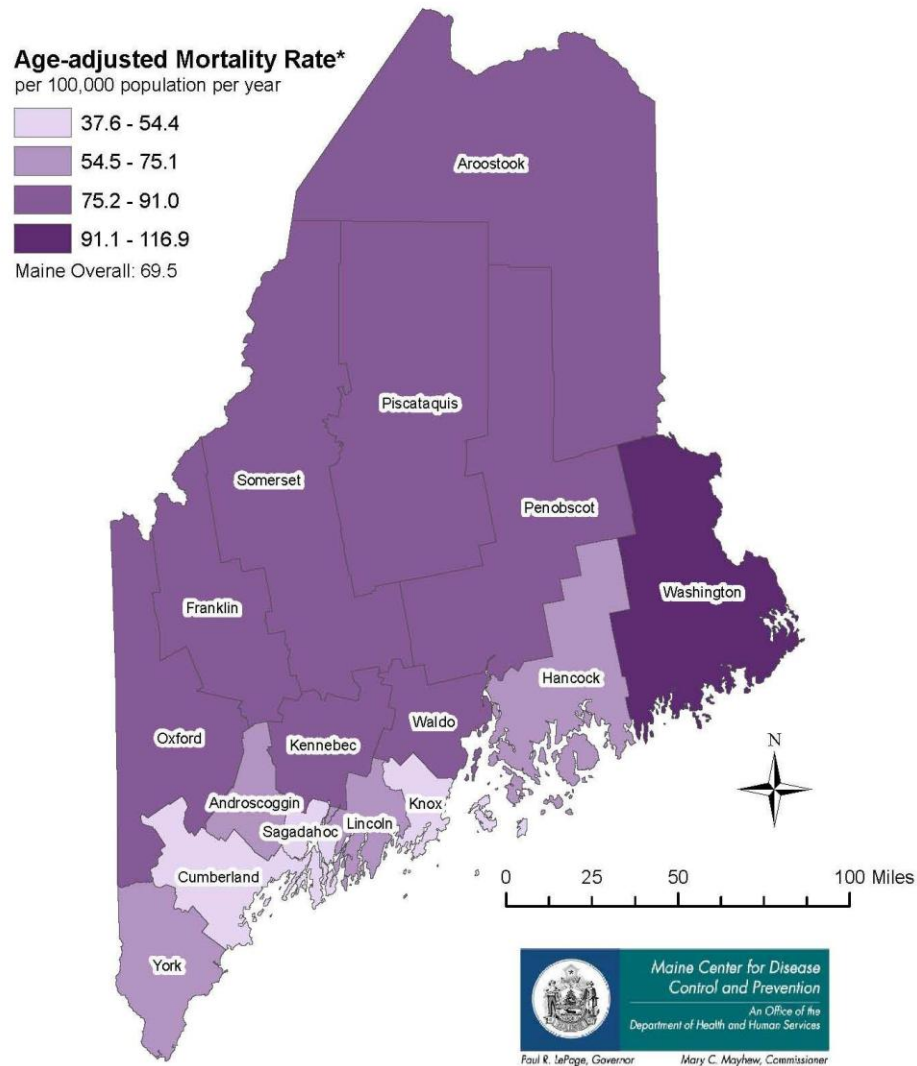
Diabetes -Related Deaths: 1999-2009: ICD-10 codes E10–E14; 1993-1998 ICD-9 code 250; underlying or contributing cause of death.

Change in ICD code represented by break in graph line.

Rates per 100,000 population.

Data Source: Data, Research and Vital Statistics, Maine CDC.

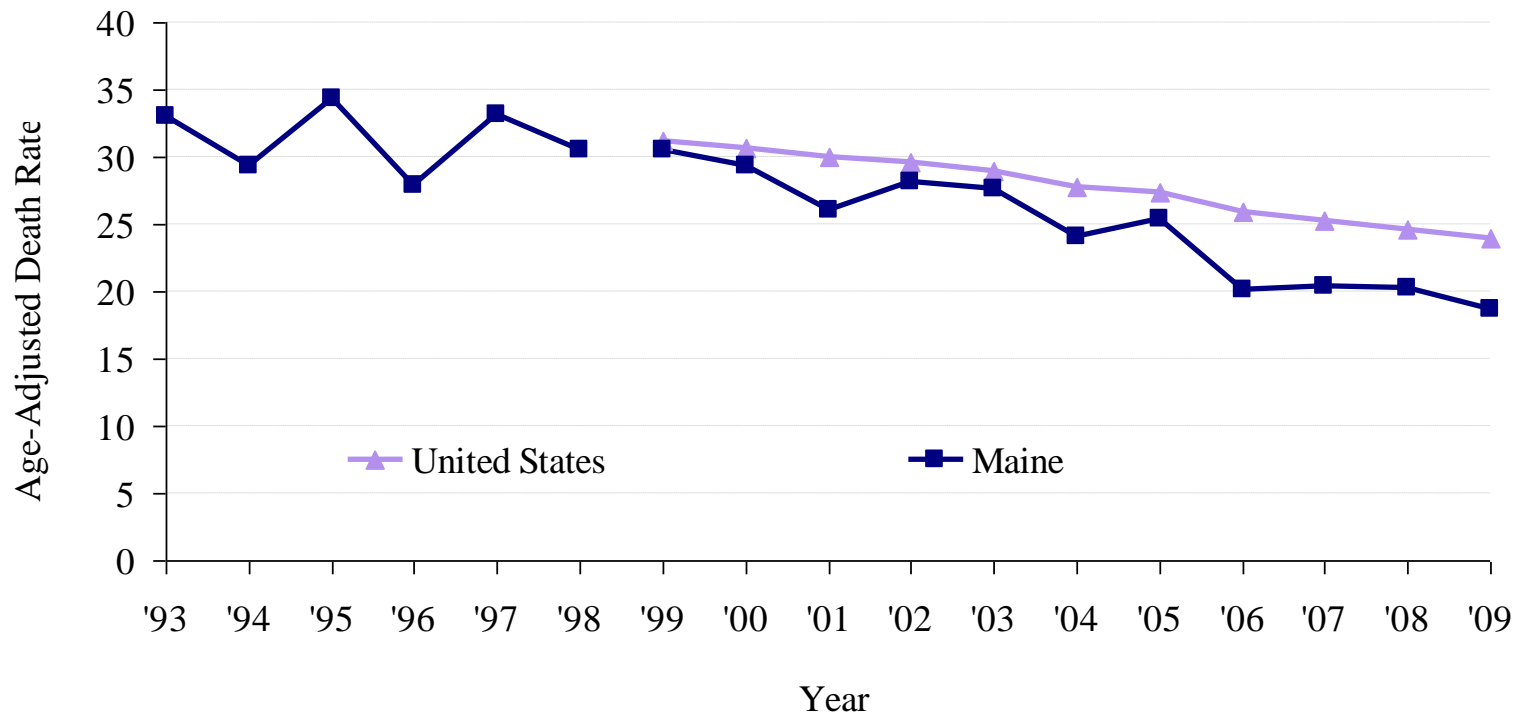
Figure 4.8 Diabetes-Related Death Rates, by County of Residence, Maine 2005-2009



Data Source: Maine Mortality Data; Data Research and Vital Statistics, Maine CDC.
 Diabetes-Related Deaths: ICD-10 codes E10-E14; underlying or contributing cause of death.
 *Age-adjusted to the year 2000 standard U.S. population

Map Created by David Pied and Nisha Kini on 04/18/2012

Figure 4.9 Diabetes-Related Cardiovascular Disease Deaths by Year, Maine and U.S., 1993-2009



Diabetes-Related Cardiovascular Disease Deaths: 1999-2009: ICD-10 codes I00-I78; underlying cause of death and ICD-10 codes E10–E14 as contributing cause of death; 1993-1998: ICD-9 codes 390-434, 436-448; underlying cause of death and ICD-9 code 250 as contributing cause of death.

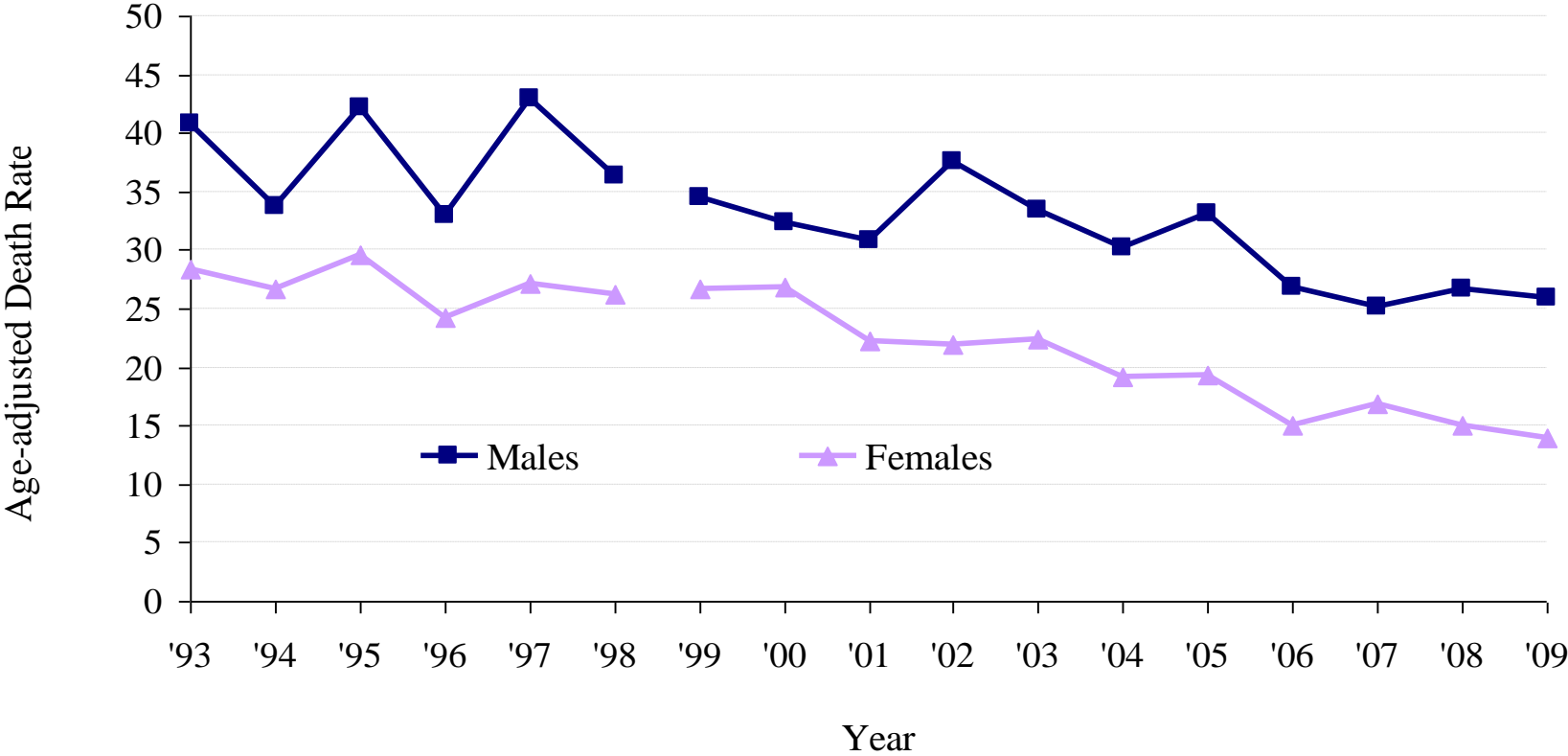
Change in ICD code represented by break in graph line.

U.S. Data not available for years 1993-1998.

Rates per 100,000 population, age-adjusted to the year 2000 standard U.S. population.

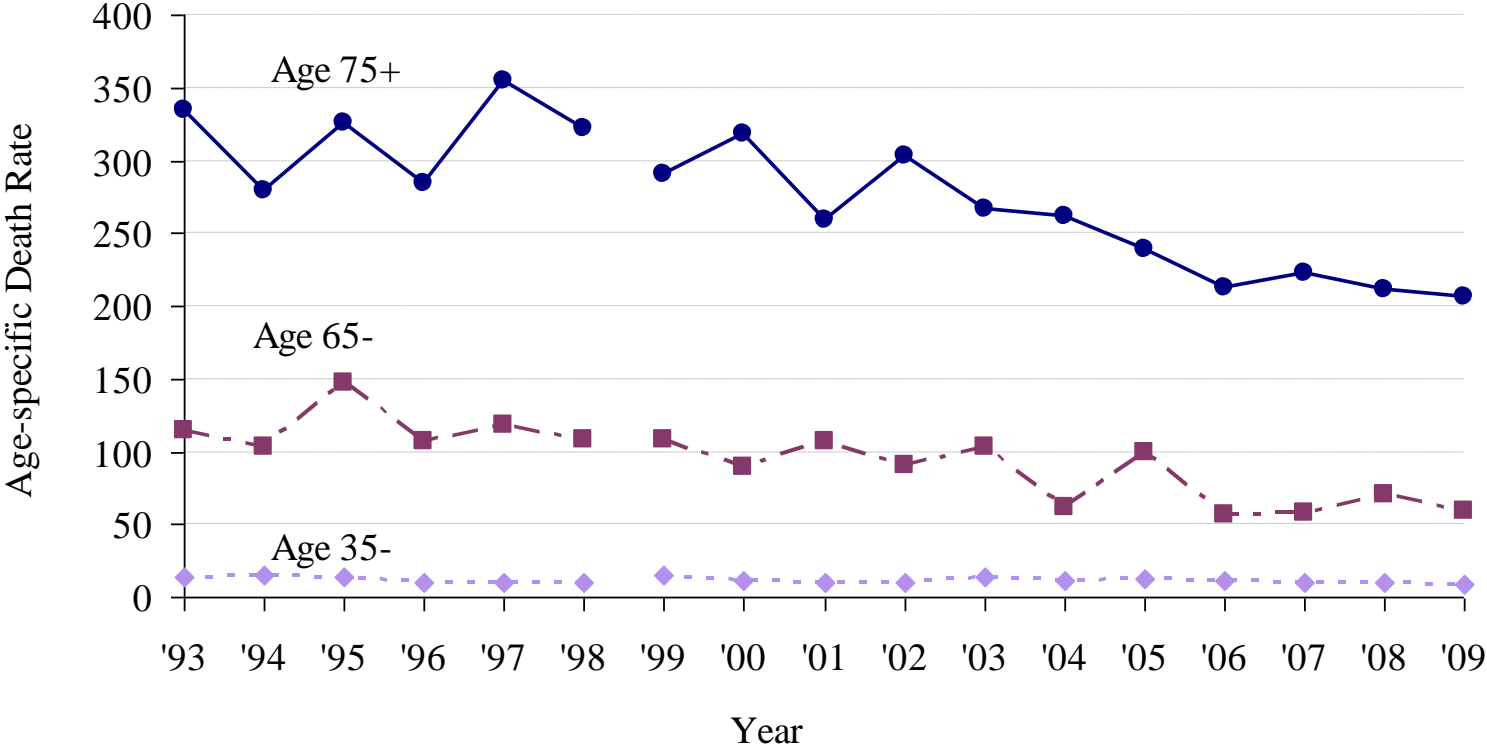
Data Source: U.S. data-CDC Wonder, Maine data- Data, Research and Vital Statistics, Maine CDC.

Figure 4.10 Diabetes-Related Cardiovascular Disease Deaths by Gender, Maine, 1993-2009



Diabetes-Related Cardiovascular Disease Deaths: 1999-2009: ICD-10 codes I00-I78; underlying cause of death and ICD-10 codes E10–E14 as contributing cause of death; 1993-1998: ICD-9 codes 390-434, 436-448; underlying cause of death and ICD-9 code 250 as contributing cause of death.
 Change in ICD code represented by break in graph line.
 Rates per 100,000 population, age-adjusted to the year 2000 standard U.S. population.
 Data Source: Data, Research and Vital Statistics, Maine CDC.

Figure 4.11 Diabetes-Related Cardiovascular Deaths by Age Group, Maine, 1993-2009



Diabetes-Related Cardiovascular Disease Deaths: 1999-2009: ICD-10 codes I00-I78; underlying cause of death and ICD-10 codes E10-E14 as contributing cause of death; 1993-1998: ICD-9 codes 390-434, 436-448; underlying cause of death and ICD-9 code 250 as contributing cause of death.

Change in ICD code represented by break in graph line.

Rates per 100,000 population.

Data Source: Data, Research and Vital Statistics, Maine CDC.

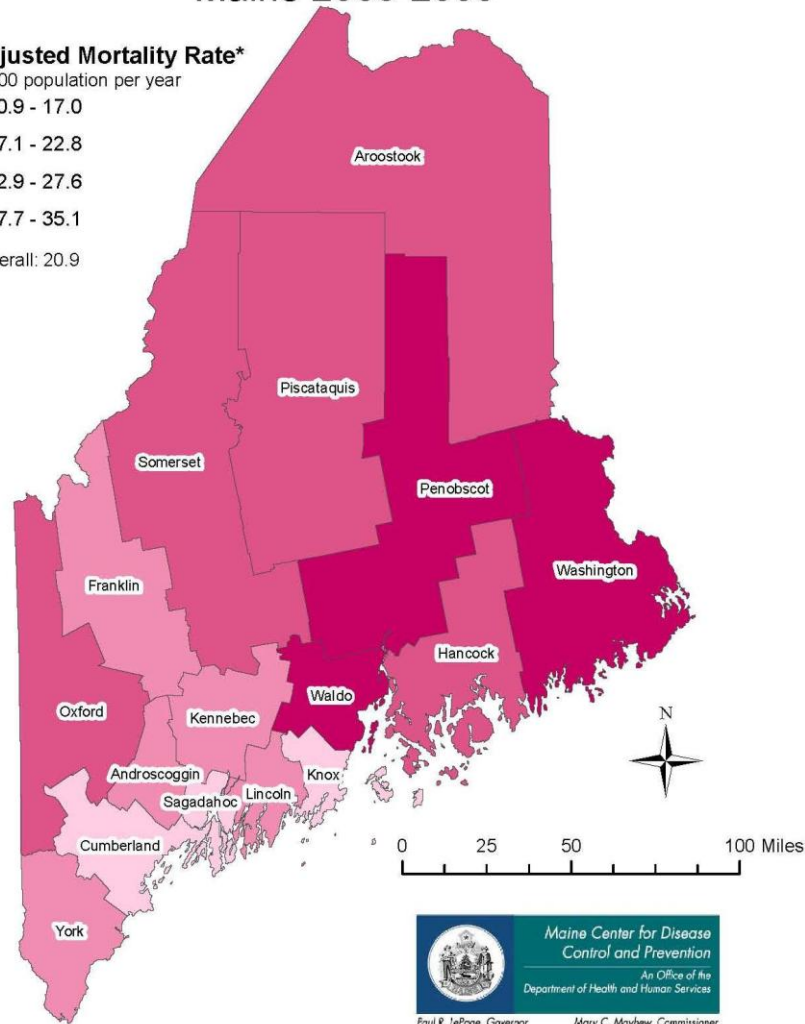
Figure 4.12 Diabetes-Related Major Cardiovascular Disease Death Rates, by County of Residence, Maine 2005-2009

Age-adjusted Mortality Rate*

per 100,000 population per year



Maine Overall: 20.9



Data Source: Maine Mortality Data; Data Research and Vital Statistics, Maine CDC.
 Diabetes-Related Major Cardiovascular Disease Deaths: ICD-10 codes I00-I78;
 underlying cause of death and ICD-10 codes E10-E14 as contributing cause of death.

*Age-adjusted to the year 2000 standard U.S. population

Map Created by David Pied and Nisha Kini on 04/18/2012

Chapter 5

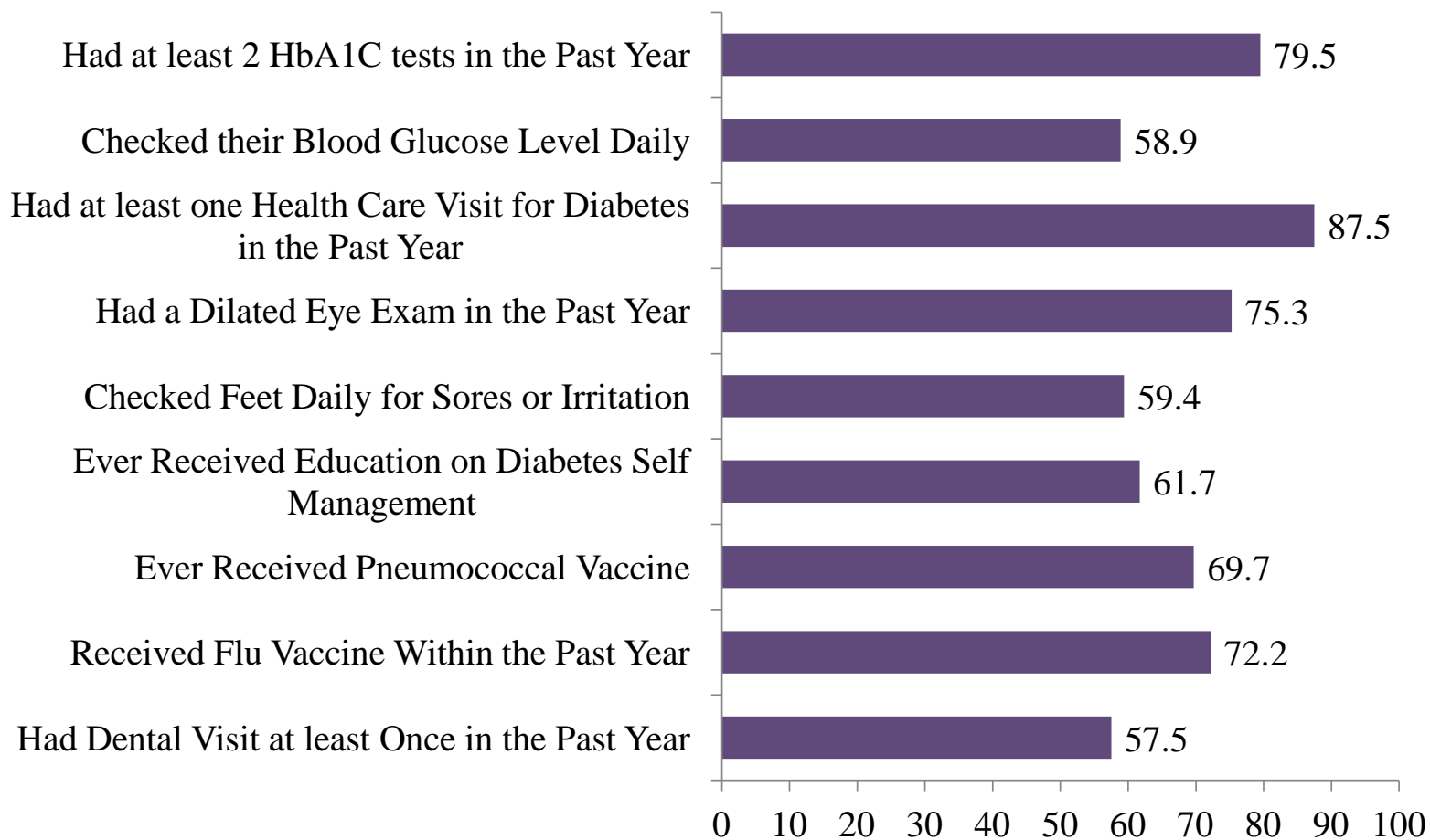
Healthy Maine 2010 Milestones
Achieved and Healthy Maine 2020
Objectives

There are no figures for
Chapter 5

Chapter 6

Preventive Practices among Maine
Adults with Diabetes

Figure 6.1 Preventive Practices among Maine Adults with Diabetes, 2010



Diabetes does not include pregnancy-related diabetes.
Adults = ages 18+ years
HbA1C= Hemoglobin A "one" C
Data Source: Behavioral Risk Factor Surveillance System

Percent of Adults with Diabetes